

Table of Contents

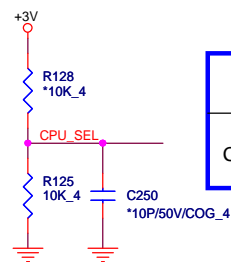
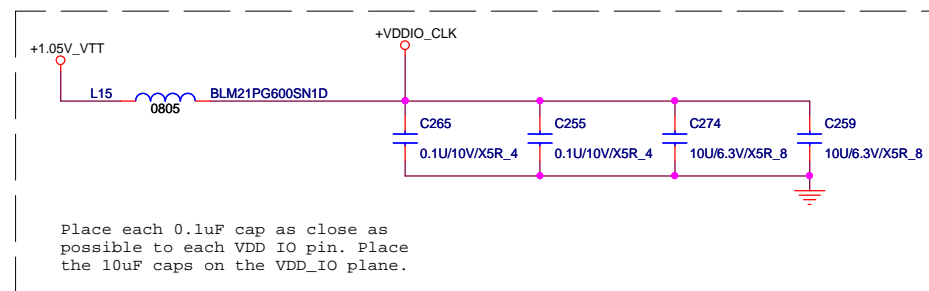
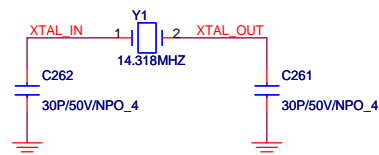
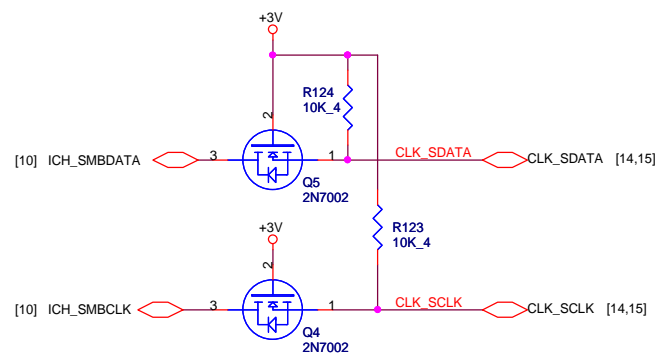
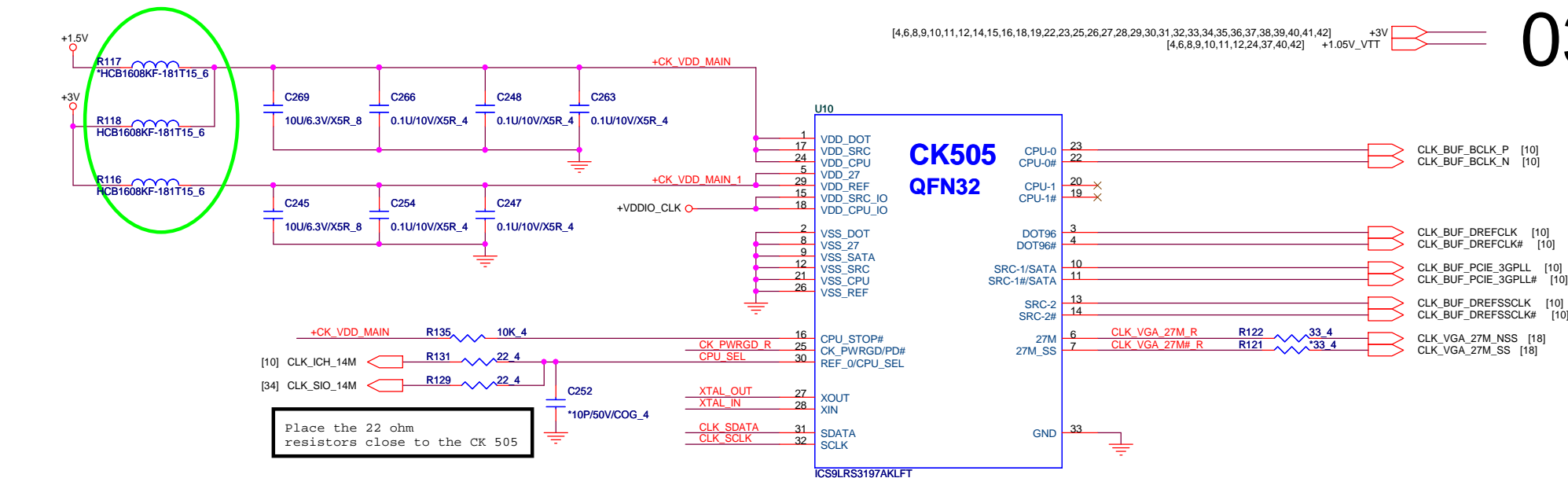
PAGE	DESCRIPTION
1	Schematic Block Diagram
2	Front Page
3	CLOCK GENERATOR
4-7	Auburndale CPU
8-13	Ibex Peak-M
14-15	DDRIII SO-DIMM
16-22	Discreate VGA (M92-XT)
23	LCD + Camera Conn.
24	HDMI Conn.
25	CRT Conn.
26	Audio Codec ALC269
27	RTL8111DL
28	SATA HDD & ODD
29	USB x 2 & ESATA
30	USB X2/SIM_CARD/LEDs/RF
31	MINI-Card (UWB & WWAN)
32	MINI-Card (WLAN)
33	ONFI
34	Express Card
35	K/B & T/P
36	BLUETOOTH
37	FAN & Thermal
38	G-Sensor
39	B To B Conn.
40	iTPM & RFID EEPROM
41	KBC IT8502E
42	HOLD & SKEW
43	Discharge
44	Charger
45	DDR3 (TPS5116REGR)
46	1.05V_VTT & 1.05_PCH (RT8204)
47	3V/5V (MAX17101)
48	CPU (MAX17082)
49	DIS_GFX_VCC (MAX8792)
50	DIS_1.8V_RUN (OZ8116LN)
51	Power Block Dianram
52	XDP
53	Revision & Schematic Value Description
54	BOM Matrix Table

Power States

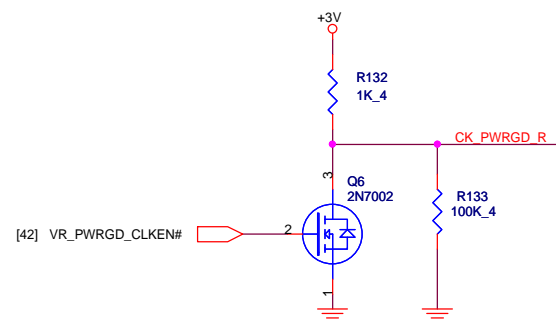
POWER PLANE	VOLTAGE	PAGE	DESCRIPTION	CONTROL SIGNAL	ACTIVE IN
VIN	10V~+20V	23,32,43,44,45,46,47,48,49,50	MAIN POWER		S0-S5
+3VRTC	+3.0V~+3.3V	9,12,41	RTC		S0-S5
3VPCU	+3.3V	9,23,27,30,32,35,39,41,43,44,47	ITE8052 POWER	3V5V_EN	S0-S5
5VPCU	+5V	14,43,44,45,46,47,49,50	DC/DC POWER IC SOURCE	3V5V_EN	S0-S5
+15V	+15V	23,38,43,45,46,47	LARGE POWER	3V5V_EN	S0-S5
LANVCC	+3.3V	27,43	LAN POWER	LAN_ON	
5V_S5	+5V	12,29,30,43	PCH SUS POWER	S5_ON	S0-S3
3V_S5	+3.3V	8,9,10,11,12,43,52	Sys Management,PCH Resume Well, Intel HD Audio,USB,WLAN WiMAX POWER	S5_ON	S0-S3
5VSUS	+5V	23,39,43,48	SLP_S4# CTRLD POWER	SUSON	S0-S3
3VSUS	+3.3V	14,15,30,34,41,43,49	SLP_S4# CTRLD POWER	SUSON	S0-S3
1.5VSUS	+1.5V	4,6,14,15,43,45,46,49,50	SODIMM POWER	SUSON	S0-S3
0.75VSMDDR_VTERM	+0.75V	14,15,43,45	DDR3 SODIMM REFERENCE POWER	MAIN_ON	S0
+5V	+5V	12,18,23,24,25,26,28,35,37,41,43,44	SLP_S3# CTRLD POWER	MAIN_ON	S0
+3V	+3.3V	3,4,8,9,10,11,12,14,15,17,23,25,26,27,28,29,30,31,32,33,34,36,37,38,39,40,41,43,44,45,46,47,48,50,52	SLP_S3# CTRLD POWER	MAIN_ON	S0
+1.8V	+1.8V	6,12,17,18,21,22,33,43,50	LVDS,NVM POWER	MAIN_ON	S0
+1.5V	+1.5V	12,18,19,20,31,32,34,45,46	Mini PCIe,Express Card POWER	MAIN_ON	S0
+1.05V_VTT	+1.05V	4,6,11,12,43,46,48,52	AuBurndale VTT POWER	MAIN_ON	S0
+1.05V_PCH	+1.05V	3,10,12,43,46,52	PCH CORE POWER	1.05V_RUN_ON	S0
+VCC_GFX_CORE	+0.9V~+1.2V	18,21,43,49	VGA CORE POWER	GFXVR_EN	S0
VCC_CORE		6,43,48	CPU CORE POWER	VRON	S0
LCDVCC	+3.3V	23	LCD Power	ENVDD	S0
+5V_ODD	+5V	28	ODD Power	MAIN_ON	S0
+5V_HDD	+5V	28	HDD Power	MAIN_ON	S0
BAT-V	+10V~+17V	44	MAIN BATTERY	CHG_PBATT	S0-S5

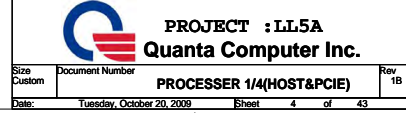


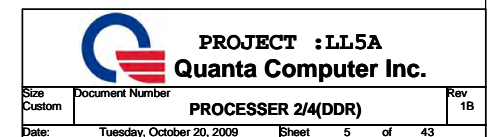
**PROJECT : LL5A**  
**Quanta Computer Inc.**

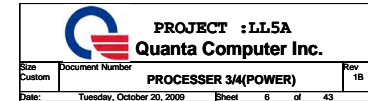


	0	1
CPU_SEL	CPU0/1=133MHz (default)	CPU0/1=100MHz







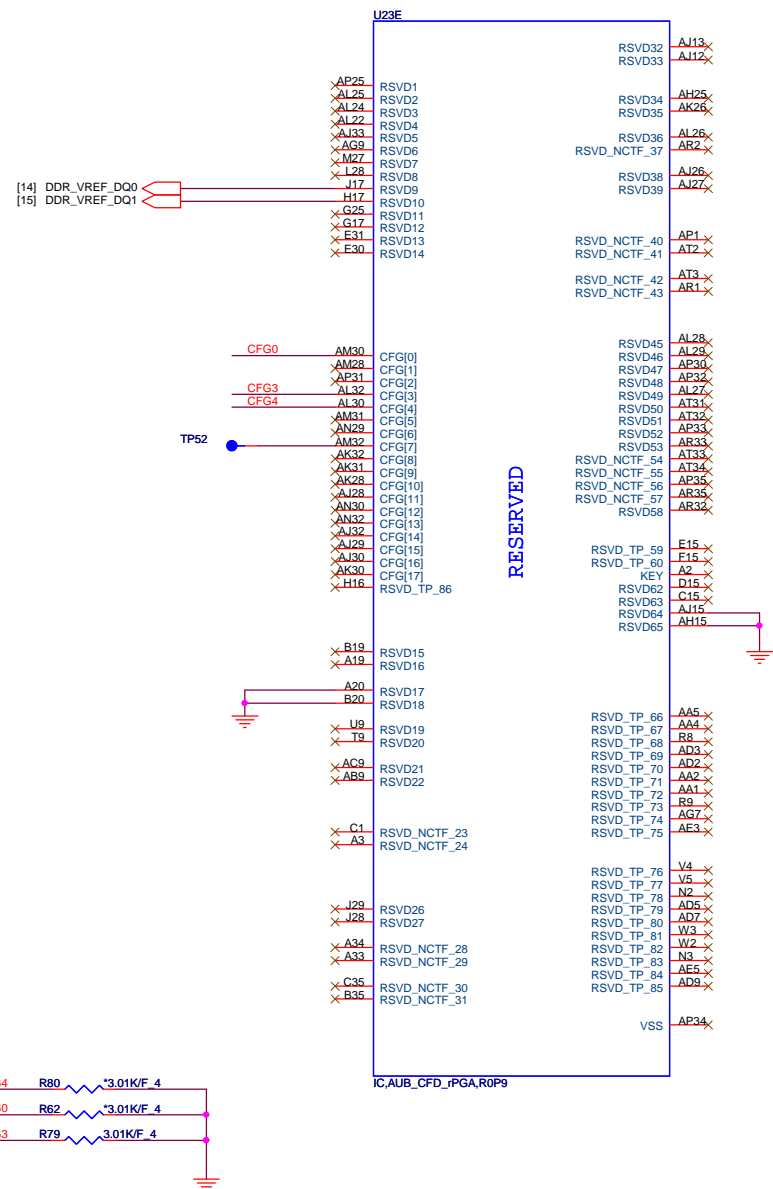
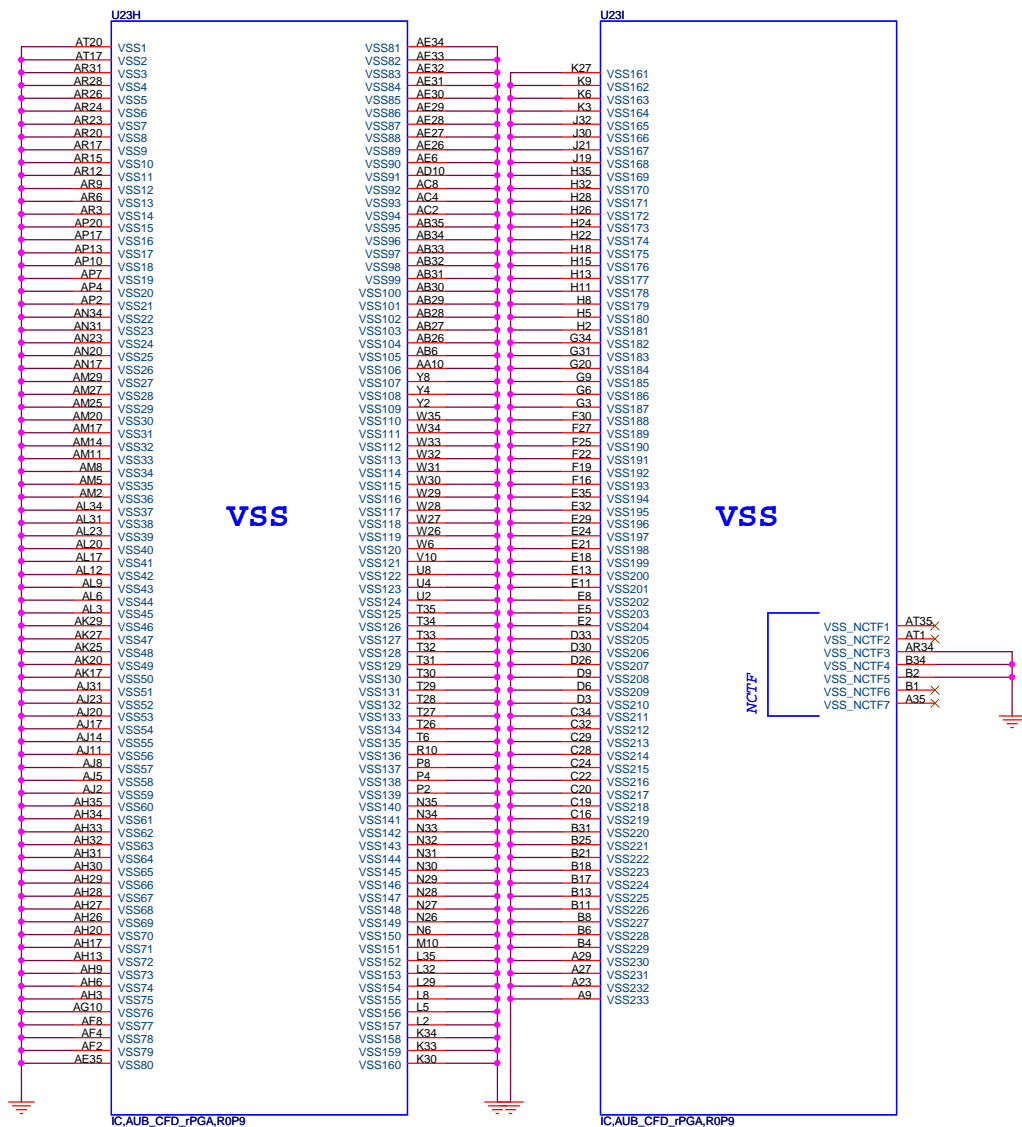




# AUBURNDALE PROCESSOR (GND)

# AUBURNDALE PROCESSOR( RESERVED, CFG)

07



	1	0
CFG4 (Display Port Presence)	Disabled; No Physical Display Port attached to Embedded Display Port	Enabled; An external Display port device is connected to the Embedded Display port
CFG0 (PCI-Epress Configuration Select)	Single PEG	Bifurcation enabled
CFG3 (PCI-Epress Static Lane Reversal)	Normal Operation	Lane Numbers Reversed

**PROJECT :LL5A**  
**Quanta Computer Inc.**

Size Custom Document Number  
**PROCESSOR 4/4(GND)**

Date: Tuesday, October 20, 2009 Sheet 7 of 43



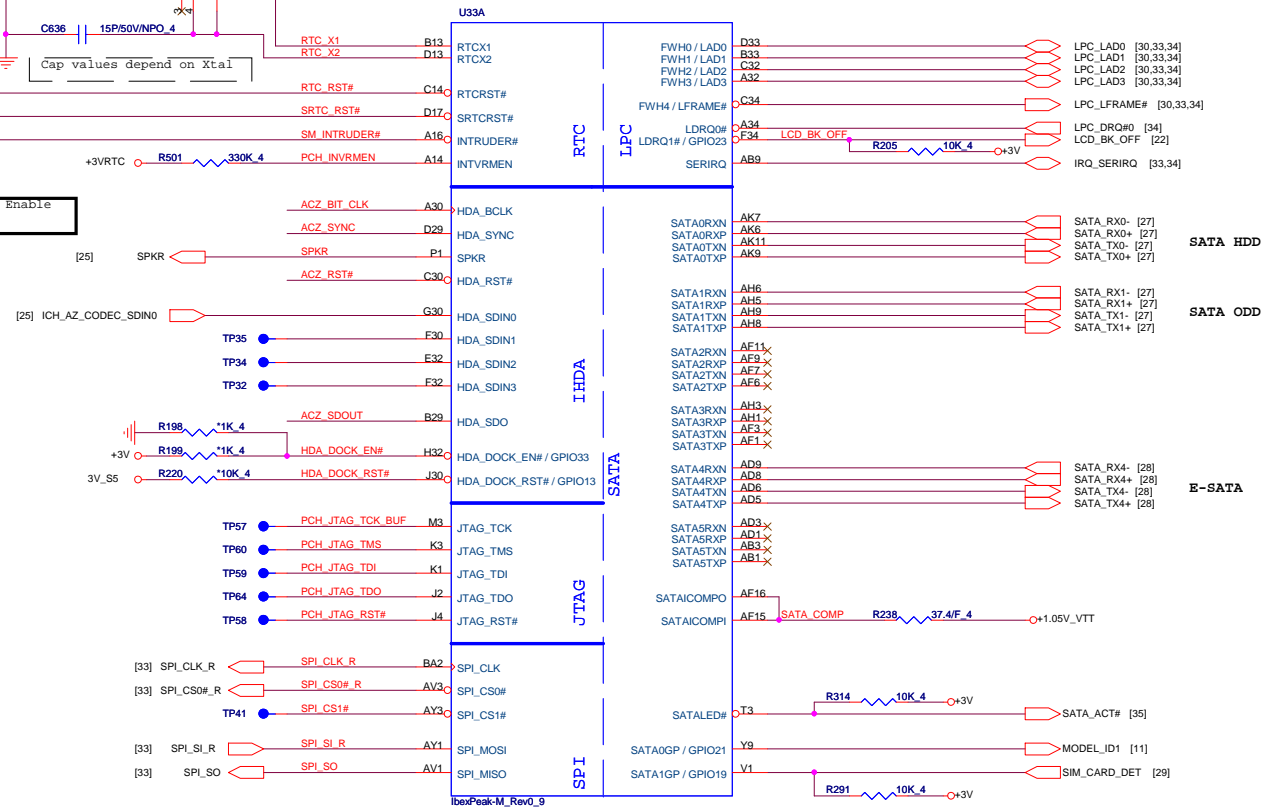


## RTC Circuitry

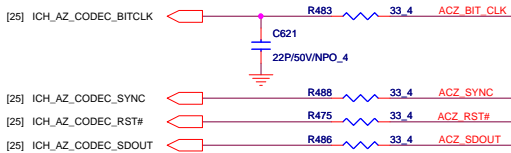
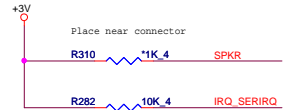
CMOS Settings	J5
Clear CMOS	1-2
Save CMOS	1-X (Default)

TPM Settings	J4
Clear ME RTC registers	1-2
Save ME RTC registers	1-X (Default)

## IBEX PEAK-M (HDA,JTAG,SATA)



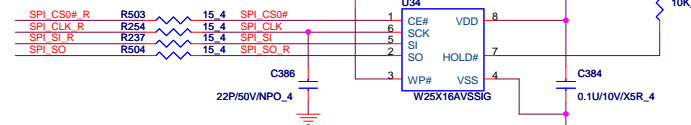
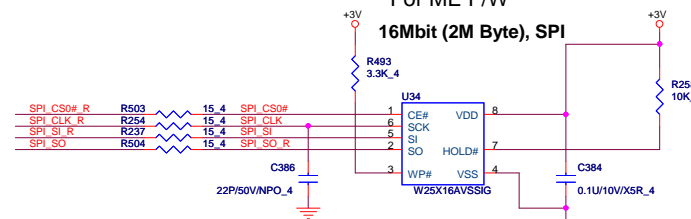
## No Reboot Strap



Place all series terms close to PCH except for SDIN input lines, which should be close to source. Placement of R773, R775, R776 & R777 should equal distance to the T split trace point. Basically, keep the same distance from T for all series termination resistors.

## iTPM ENABLE/DISABLE

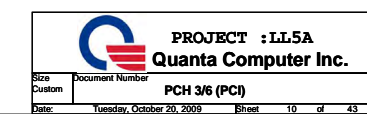
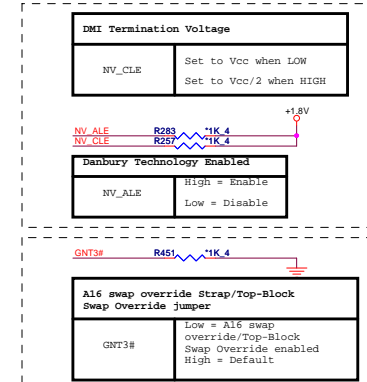
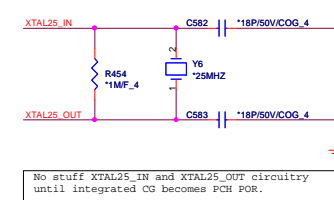
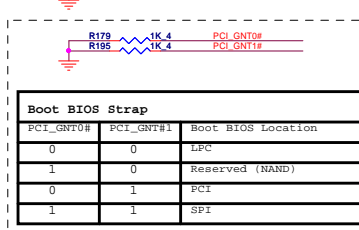
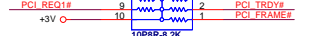
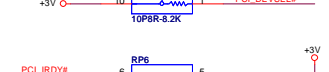
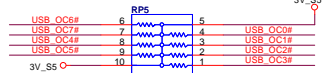
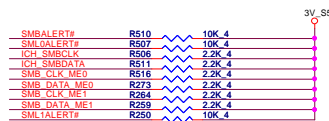
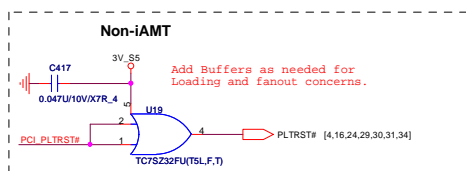
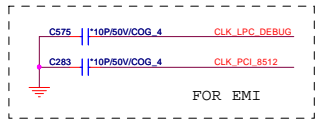
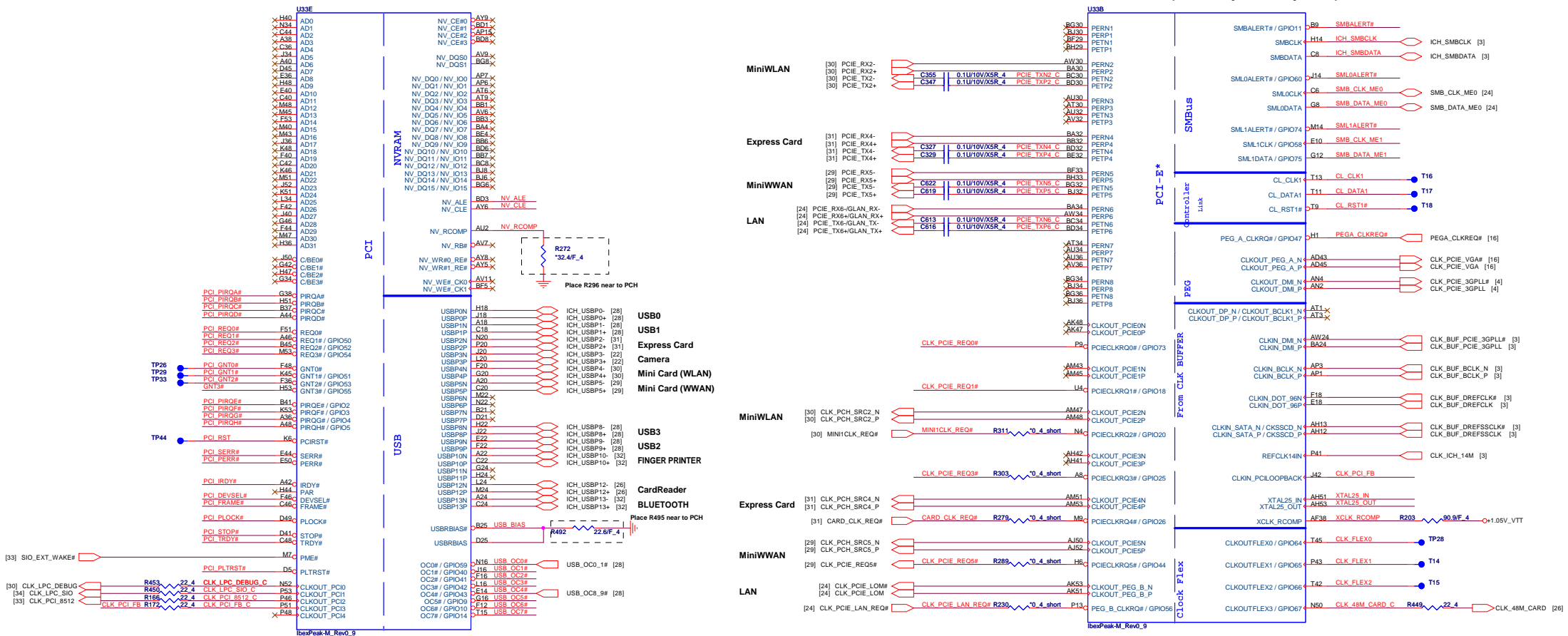
TPM Function	R292
Enable	Stuff
Disable	NC (Default)

For ME F/W  
16Mbit (2M Byte), SPI

## IBEX PEAK-M (PCI,USB,NVRAM)

## IBEX PEAK-M (PCI-E,SMBUS,CLK)

10



# IBEX PEAK-M (GPIO,VSS\_NCTF,RSVD)

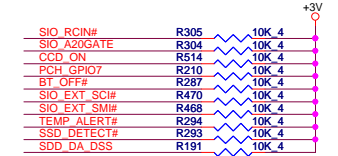
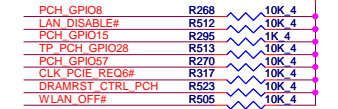
[3,4,6,8,9,10,12,14,15,16,18,19,22,23,25,26,27,28,29,30,31,32,33,34,35,36,37,38,39,40,41,42]

+3V

[4,8,9,10,12,24,30,37] 3V\_S5

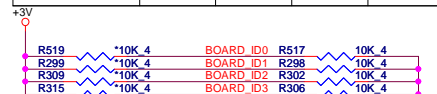
[3,4,6,8,9,10,12,24,37,40,42] +1.05V\_VTT

11



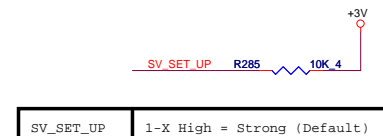
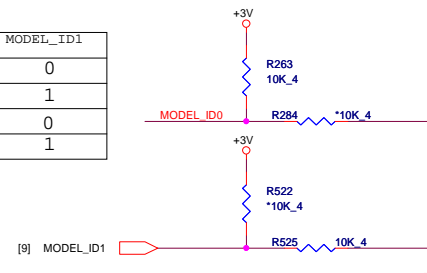
## Board ID

Board ID For Function	ID3 GPIO39	ID2 GPIO38	ID1 GPIO37	ID0 GPIO36
SDV	0	0	0	0
SIV	0	0	0	1
SIT	0	0	1	0
SVT	0	0	1	1
SOVP	0	1	0	0



## Model ID

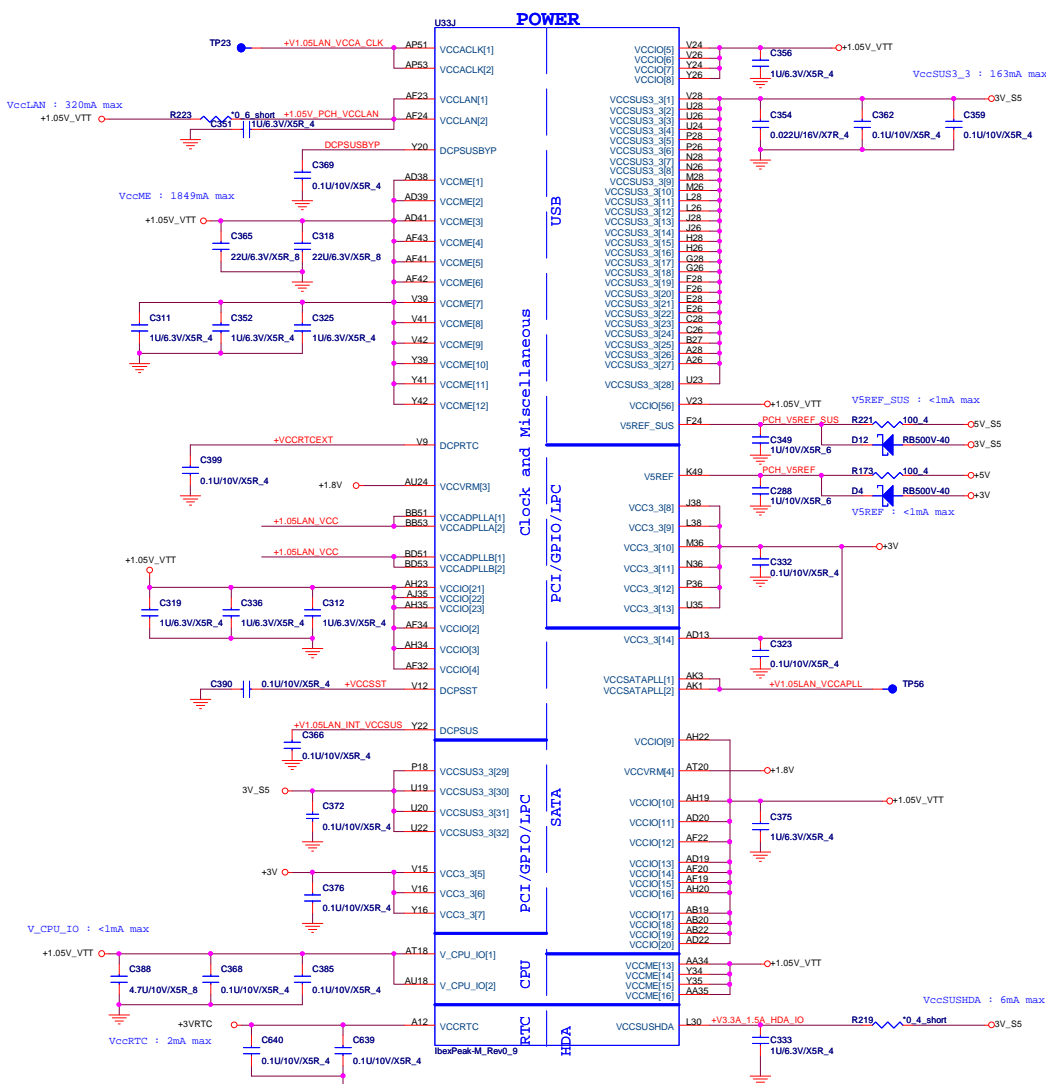
Model ID	MODEL_ID0	MODEL_ID1
Default	0	0
LL3/LL3A	0	1
LL5/LL5A	1	0
	1	1

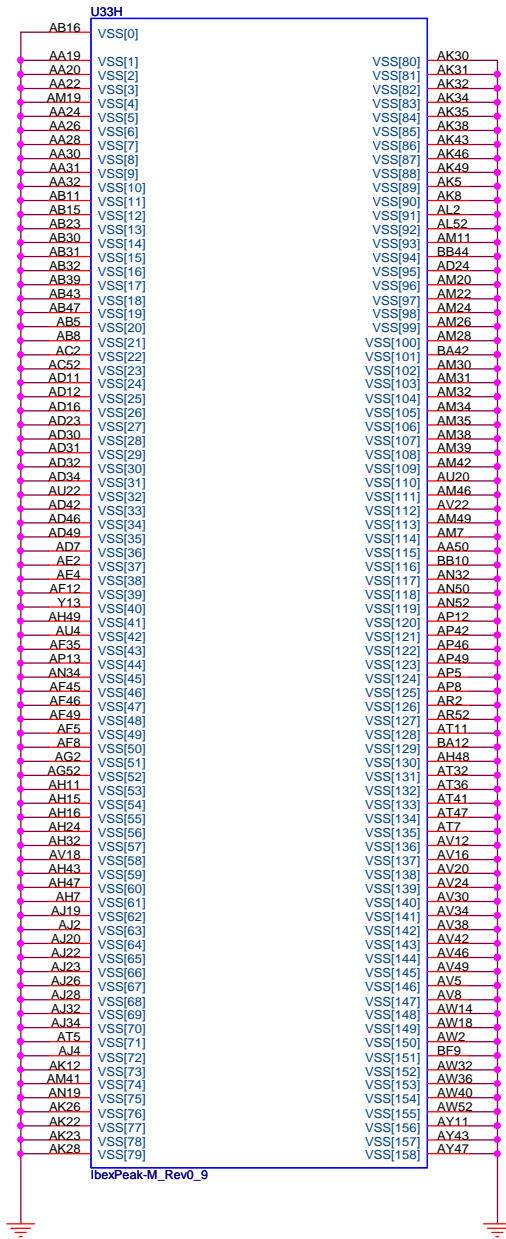


SV\_SET\_UP 1-X High = Strong (Default)

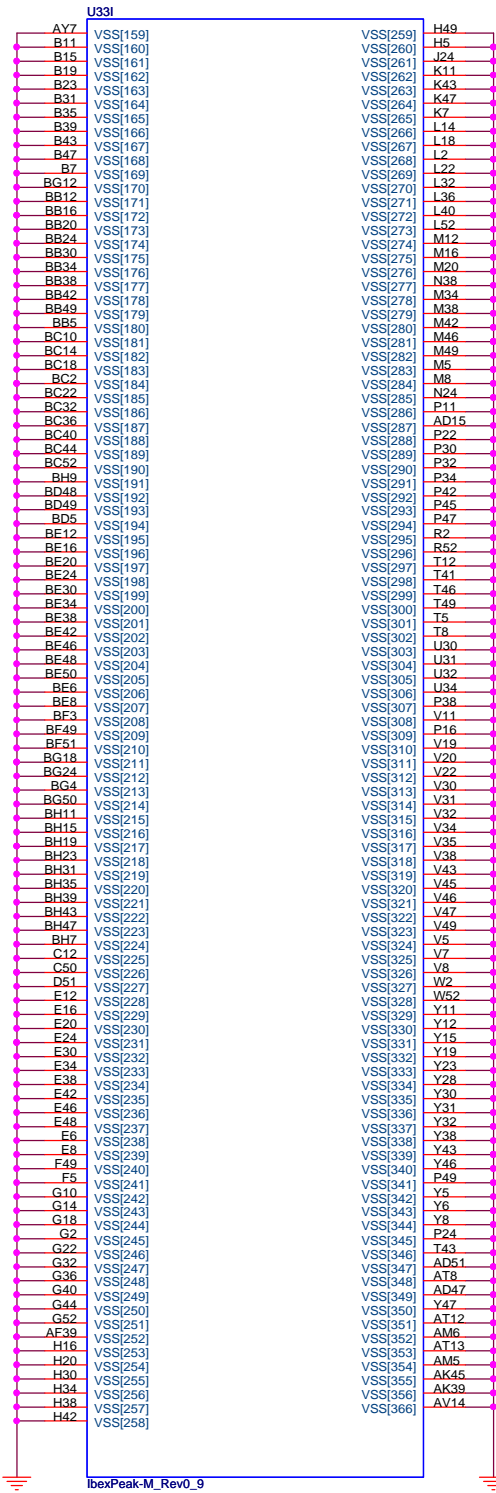
**PROJECT :LL5A**  
**Quanta Computer Inc.**

Size Custom Document Number PCH 4/6 (GPIO) Rev 1B  
Date: Saturday, October 24, 2009 Sheet 11 of 43

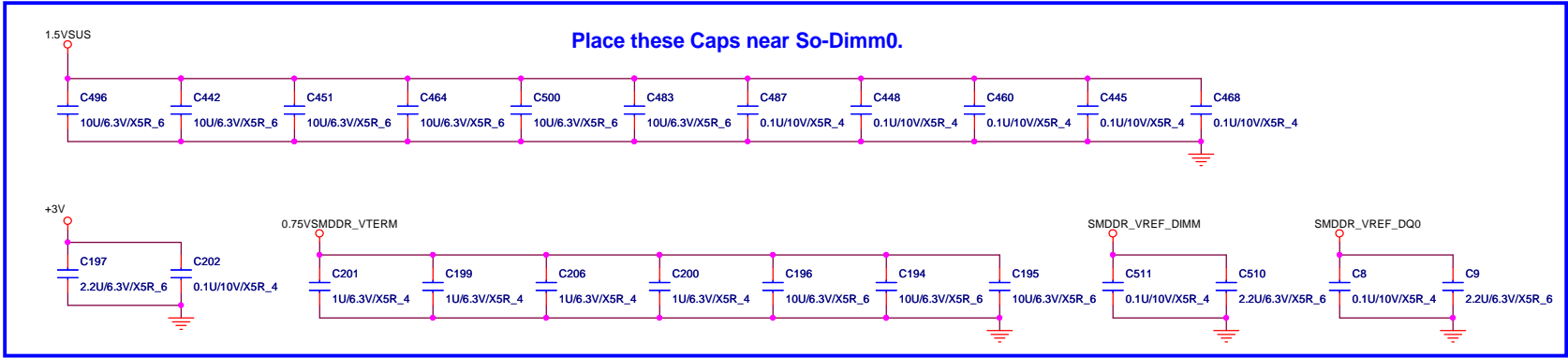
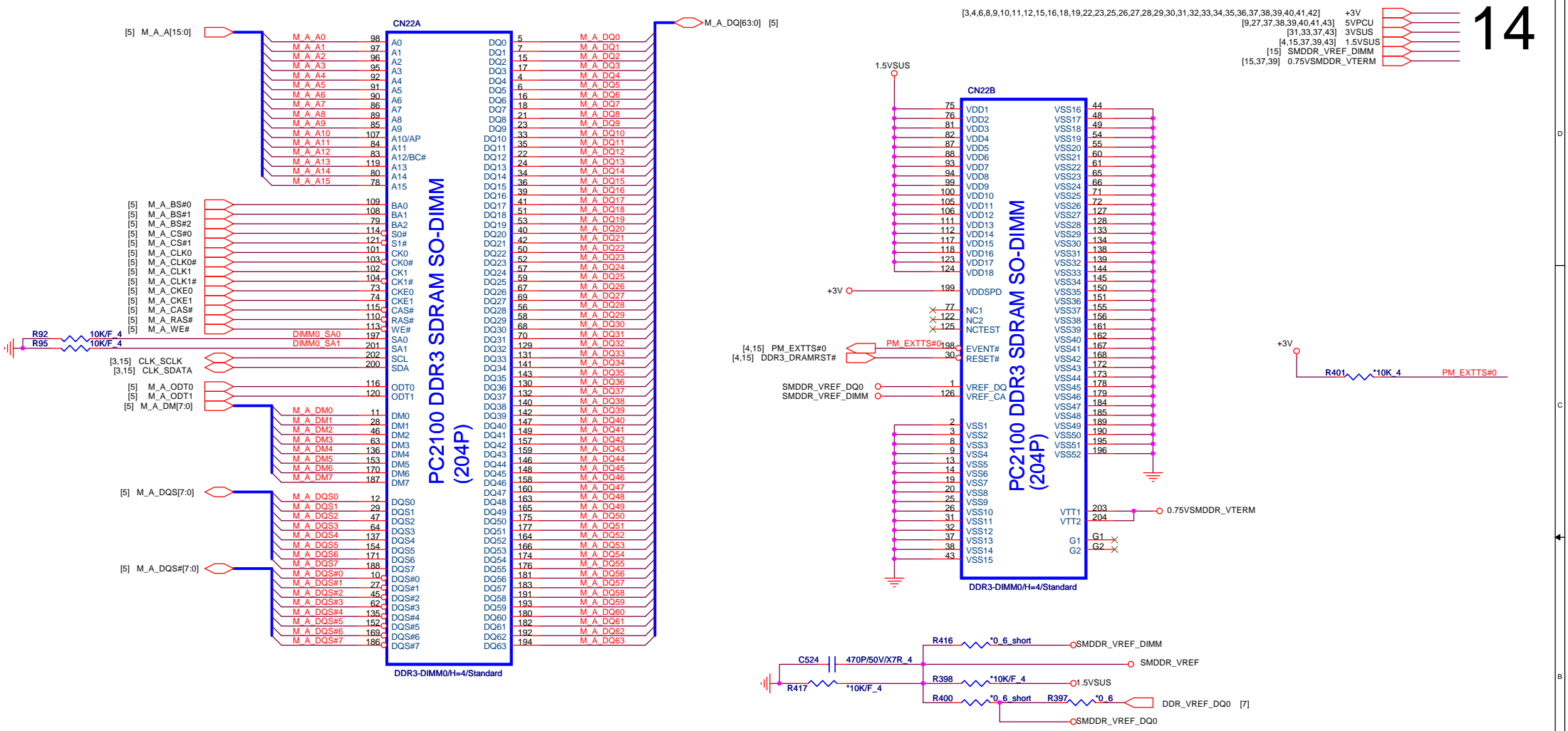





IbexPeak-M\_Rev0\_9



IbexPeak-M\_Rev0\_9





**PROJECT : LL5A**

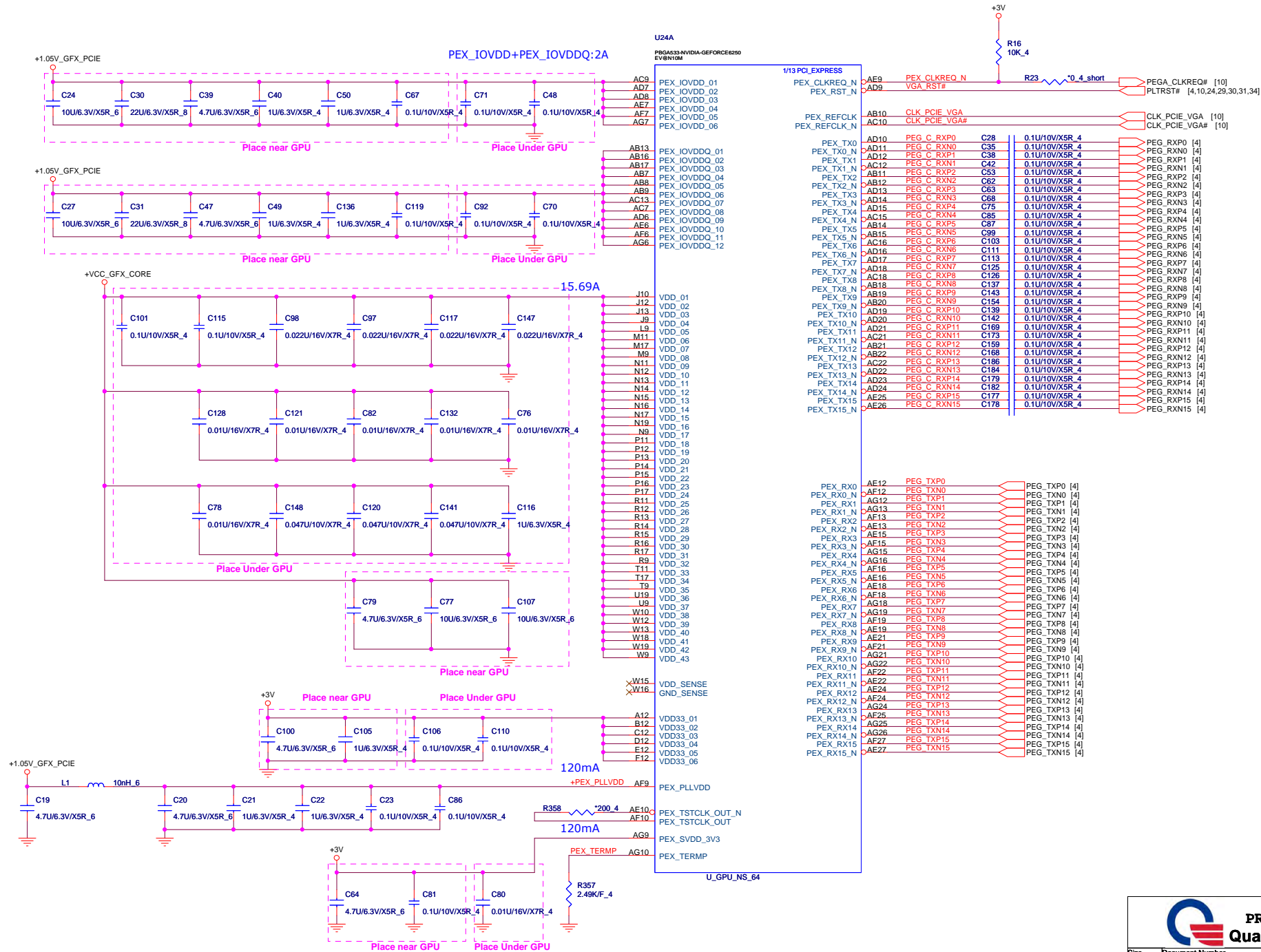
**Quanta Computer Inc.**

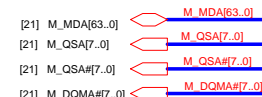
Size Custom	Document Number	Rev 1B
DDR3 DIMM-0(H=5.2)		
Date:	Tuesday, October 20, 2009	Sheet 14 of 43

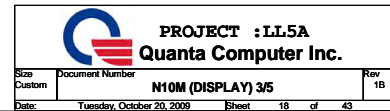




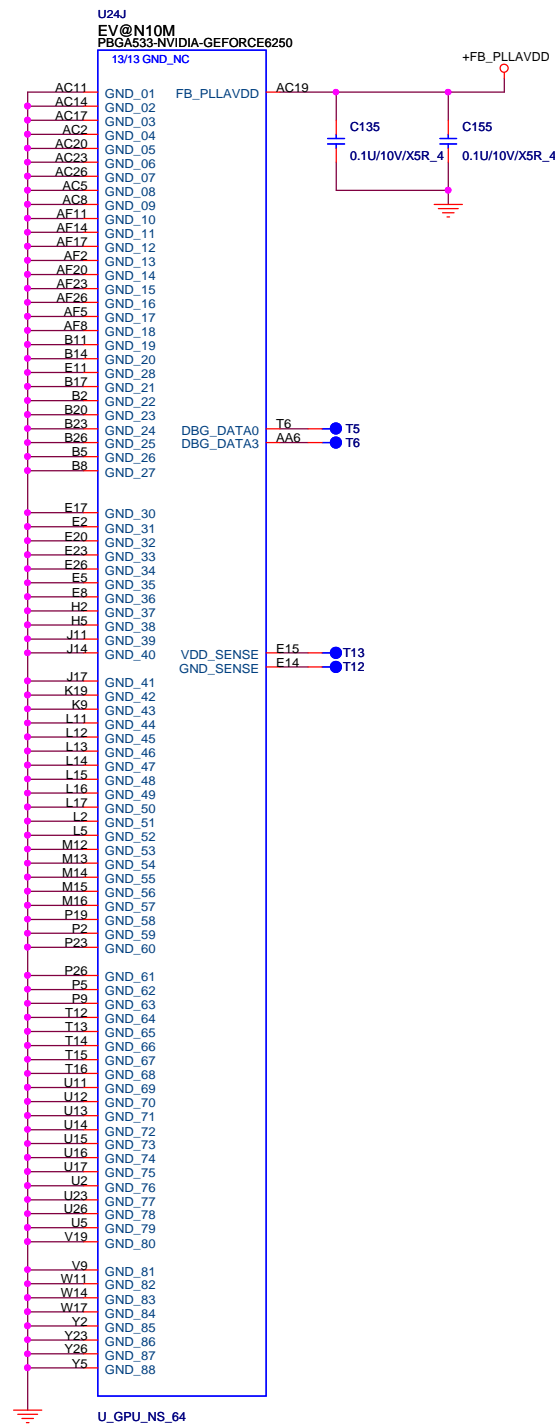




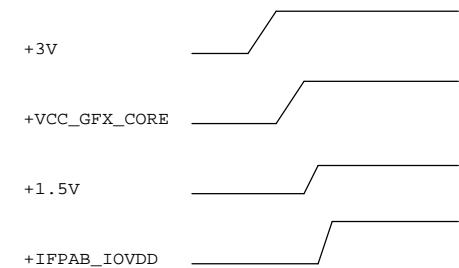






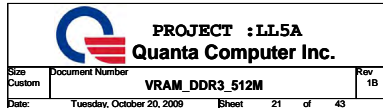


### power up sequence

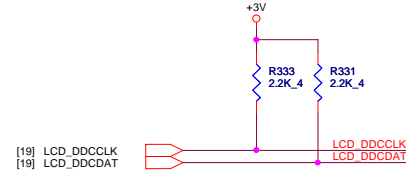
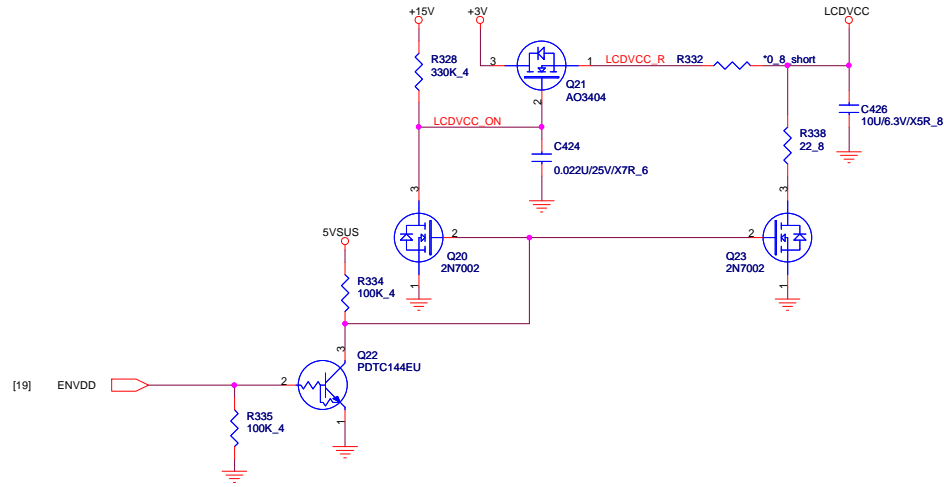


PROJECT : LL5A  
Quanta Computer Inc.

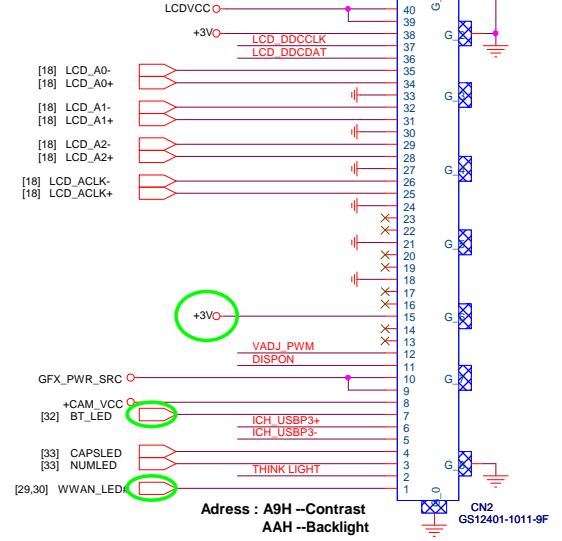
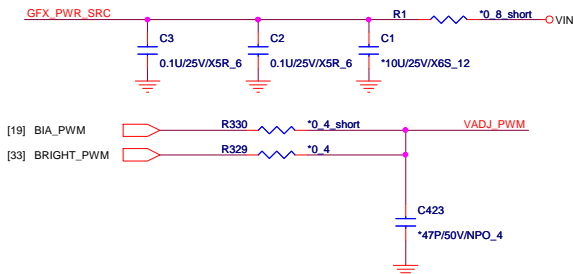
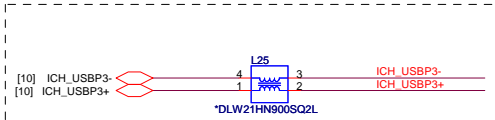
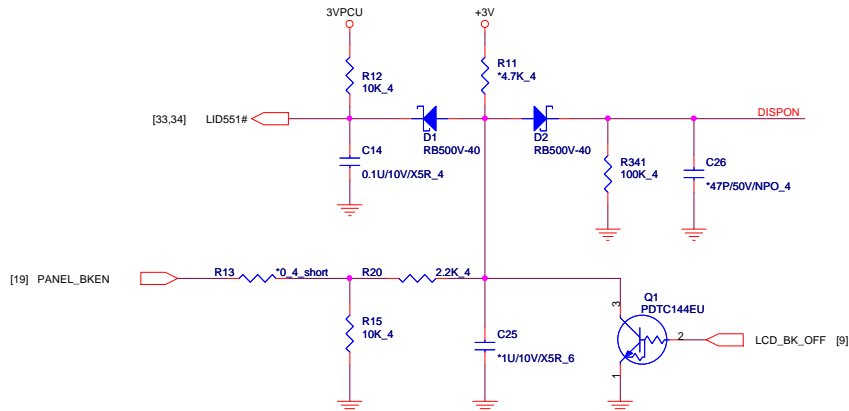
Size Custom	Document Number <b>N10M (GND) 5/5</b>	Rev 1B
Date: Tuesday, October 20, 2009	Sheet 20	of 43



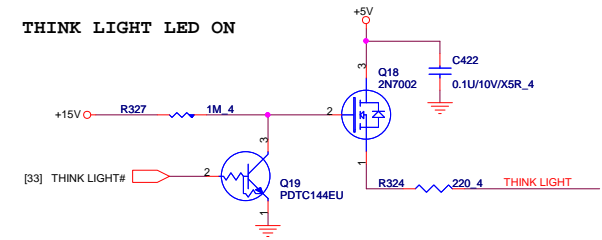
# LCDVCC



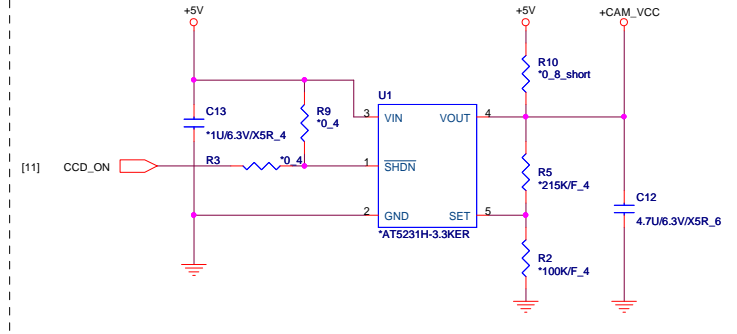
# back light



# THINK LIGHT LED ON



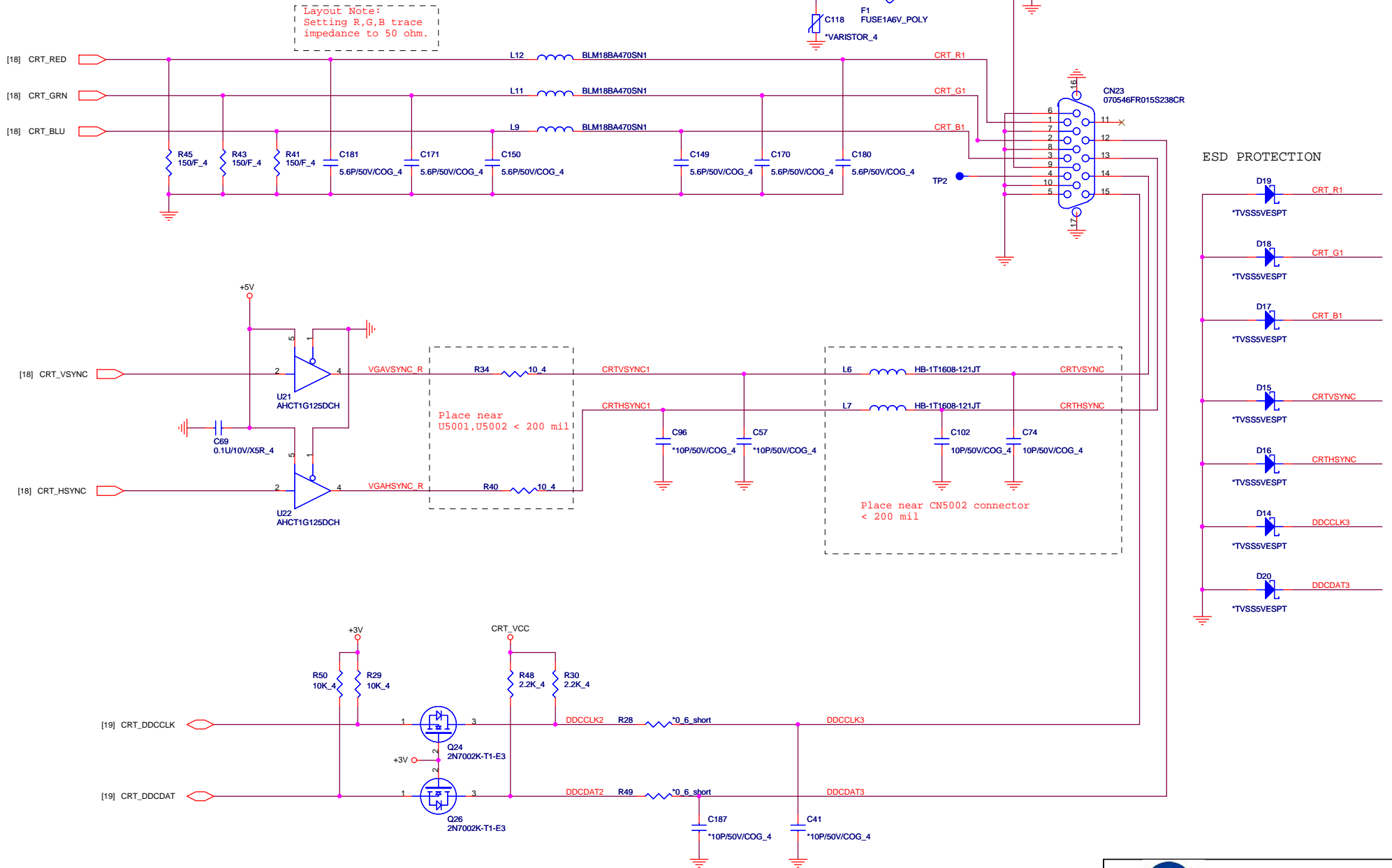
# CAMERA VCC Control

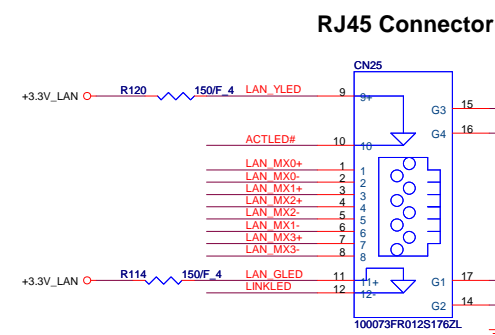
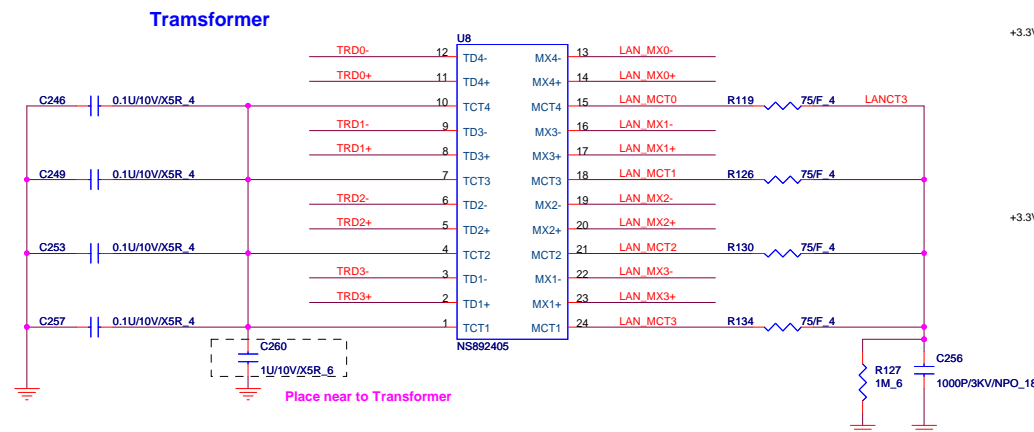
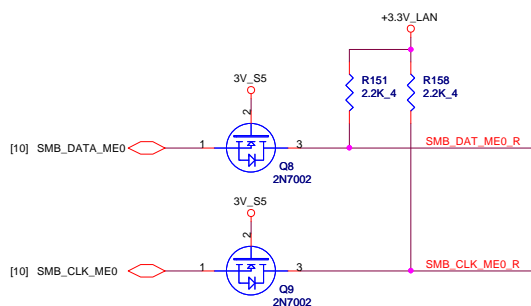
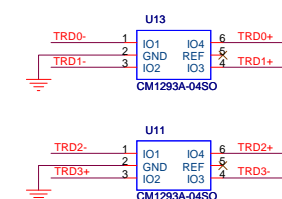
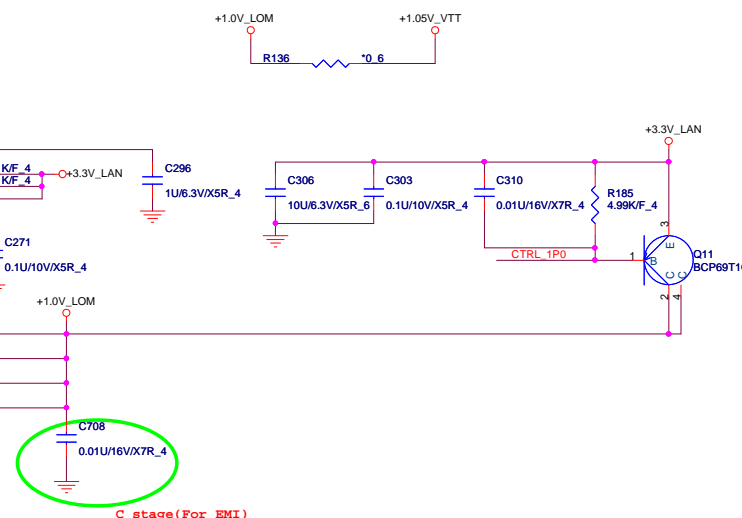
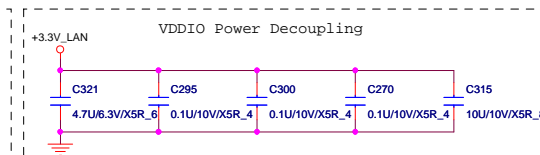
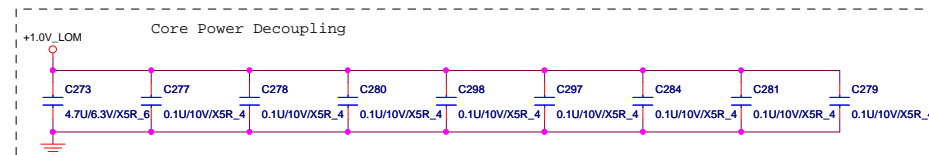


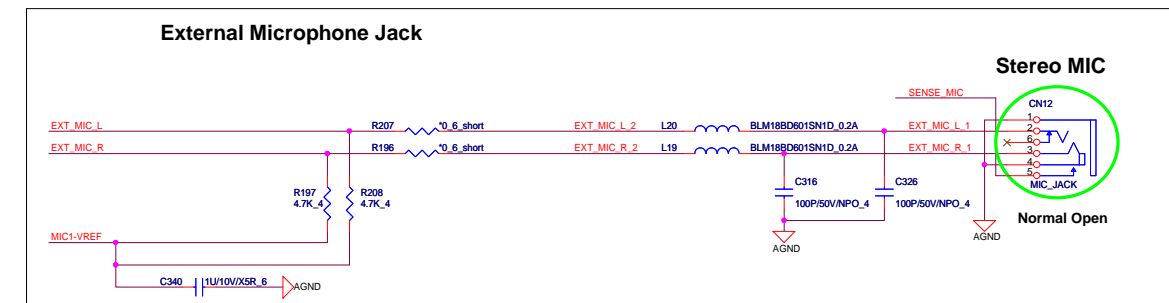
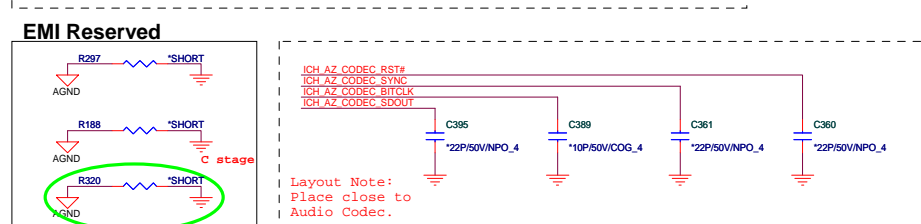
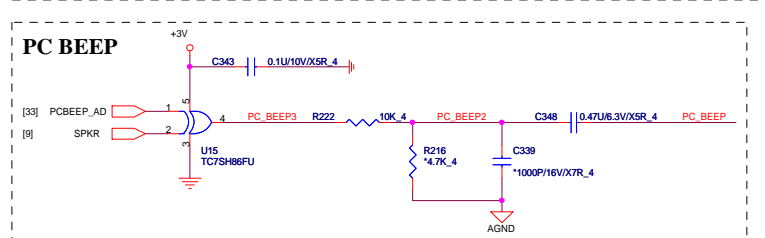
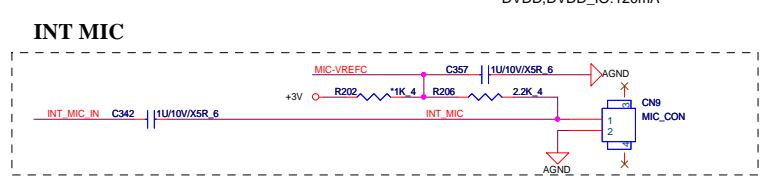
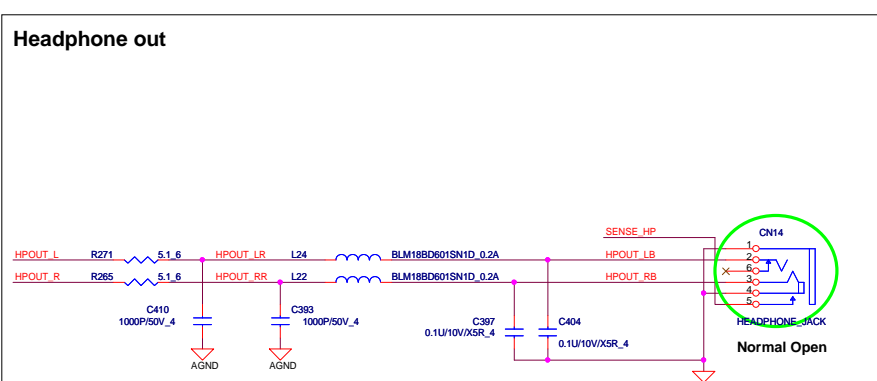
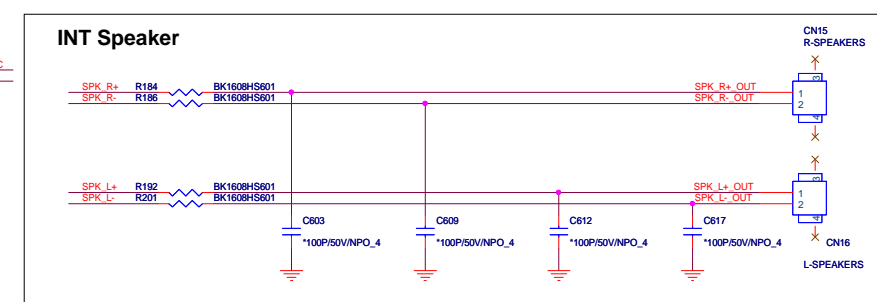
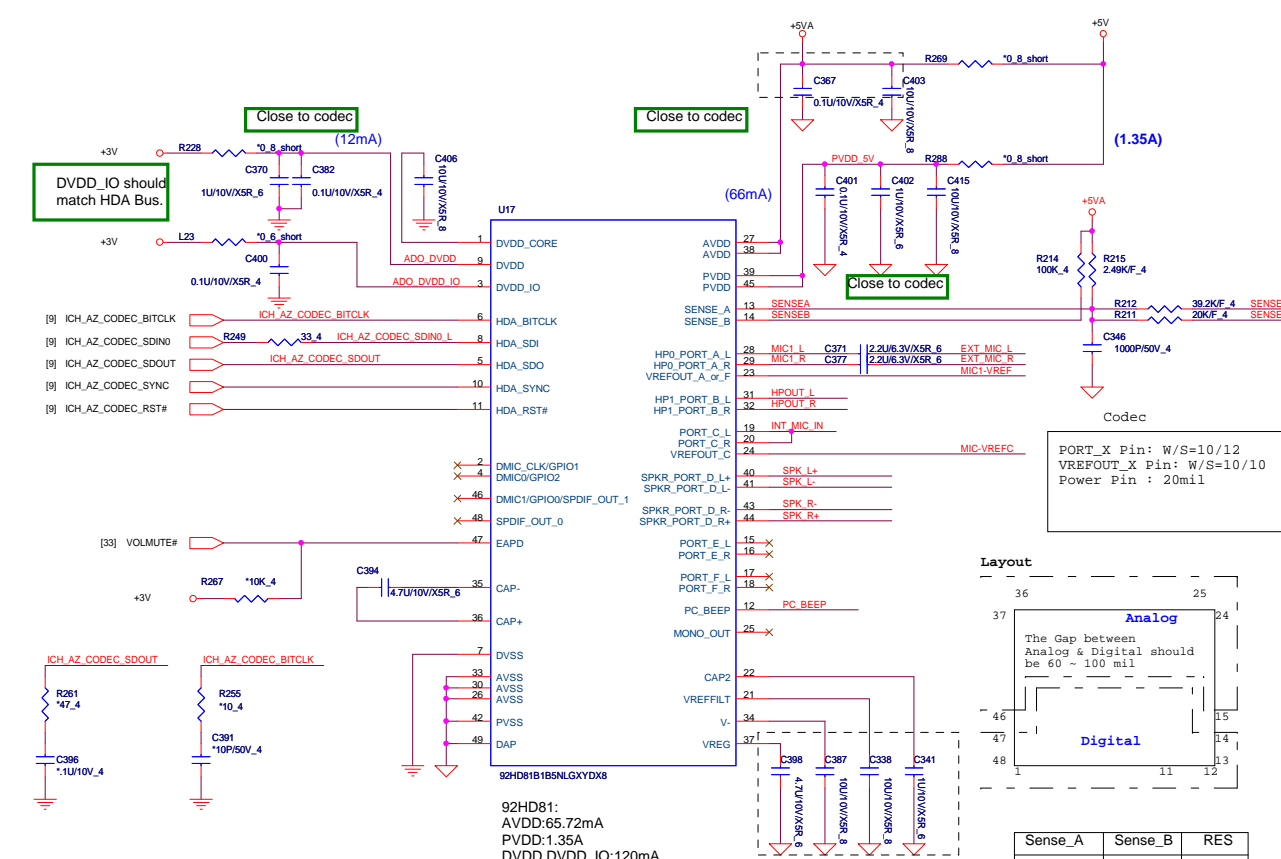
PROJECT :LL5A  
Quanta Computer Inc.

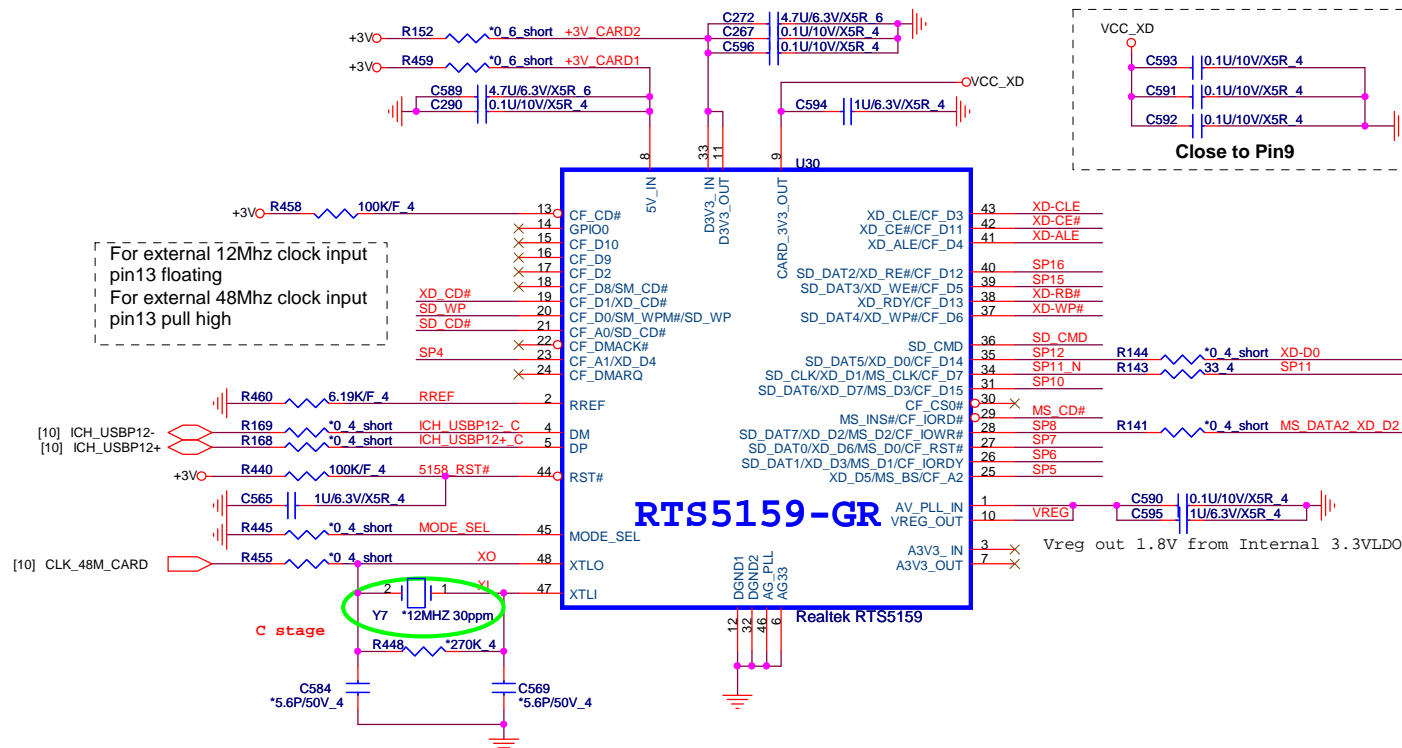
Size	Document Number	Rev
Custom	LCD CONN	1B
Date:	Tuesday, October 20, 2009	Sheet 22 of 43







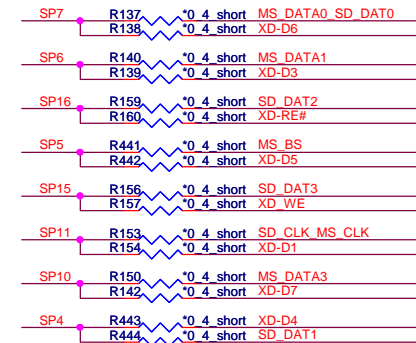




Note:

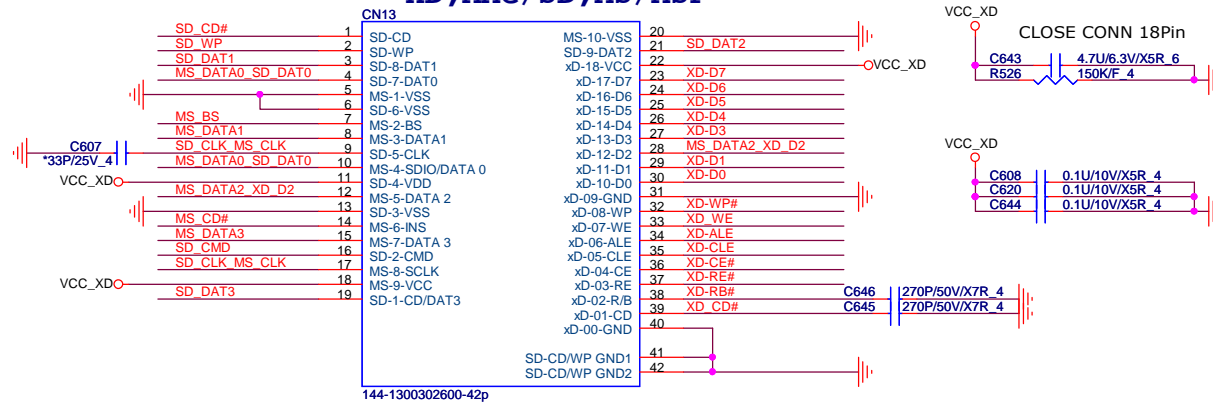
	SD/MMC	MS	XD
SP0			
SP1			XD_CD#
SP2	SD_WP		
SP3	SD_CD#		
SP4	SD_DAT1		XD_D4
SP5		MS_BS	XD_D5
SP6		MS_D1	XD_D3
SP7	SD_DAT0	MS_D0	XD_D6
SP8	SD_DAT7	MS_D2	XD_D2
SP9		MS_ILVS#	
SP10	SD_DAT6	MS_D3	XD_D7
SP11	SD_CLK	MS_SCLK	XD_D1
SP12	SD_DAT5		XD_D0
SP13	SD_DAT4		XD_WP#
SP14			XD_RB#
SP15	SD_DAT3		XD_WE#
SP16	SD_DAT2		XD_RE#
SP17			XD_ALE
SP18			XD_CE#
SP19			XD_CLE

## For RTS5159

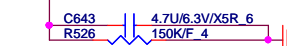


5 IN1 CARD READER

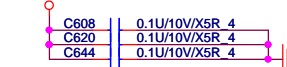
**XD, MMC/SD, MS/MSP**



CLOSE CONN 18Pin



VCC\_XD



C646	270P/50V/X7R_4
C645	270P/50V/X7R_4

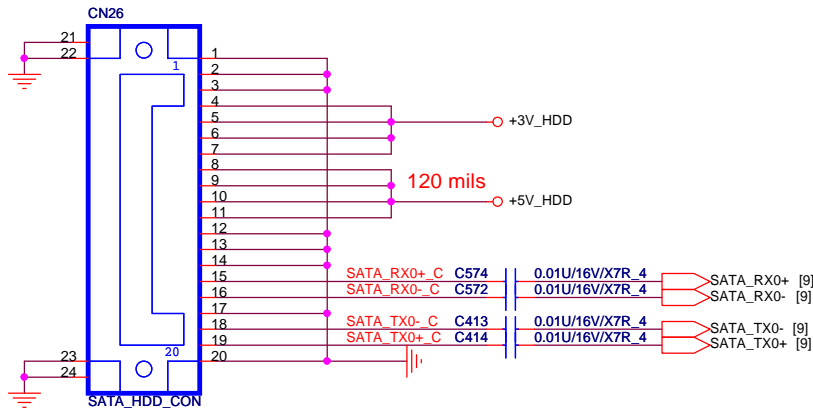
100



**PROJECT :LL5A**  
**Quanta Computer Inc.**

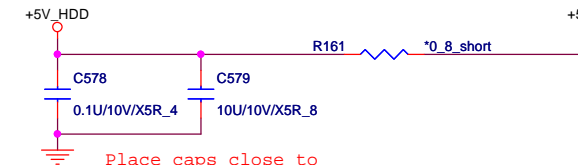
Size B	Document Number <b>Card Reader (RTS5159)</b>	Rev 1B
Date:	Tuesday, October 20, 2009	Sheet 26 of 43

## SATA-HDD CONNECTOR

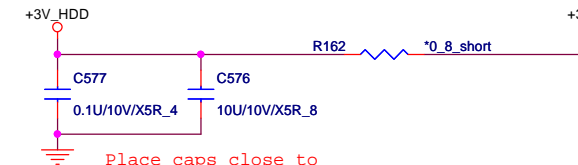


[3,4,6,8,9,10,11,12,14,15,16,18,19,22,23,25,26,28,29,30,31,32,33,34,35,36,37,38,39,40,41,42]  
 [12,22,23,25,32,33,34,35,37,38] +3V  
 [22,37,39,41] +5V  
 [9,37,38,39,40,41,43] 5VPCU  
 [9,22,24,33,34,35,37,38,40,41,43] 3VPCU

27

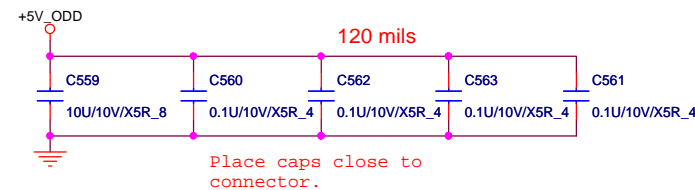
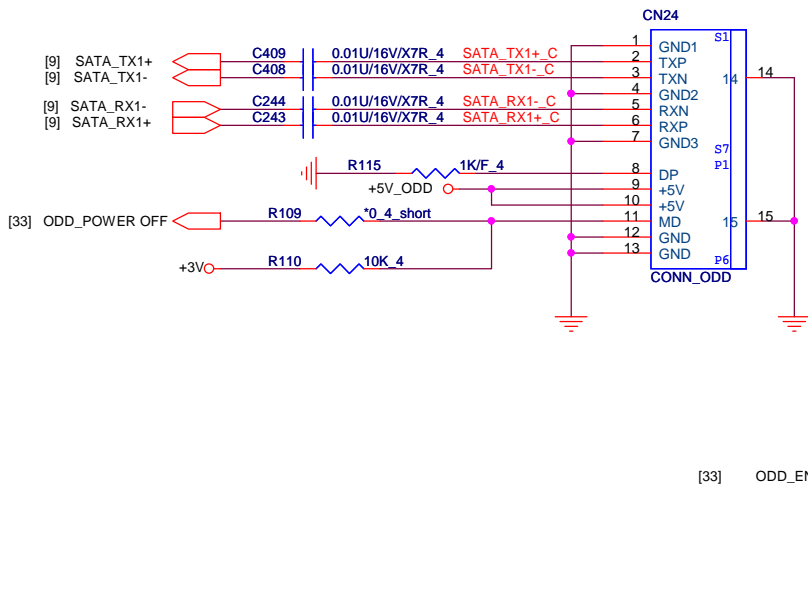


Place caps close to connector.

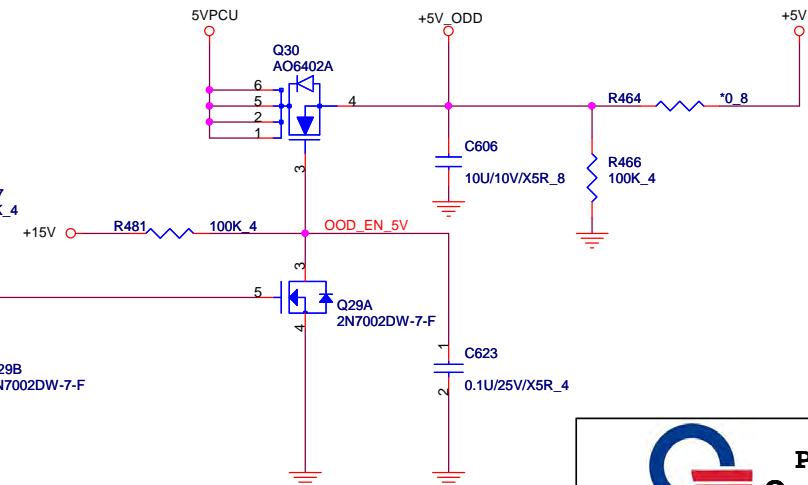


Place caps close to connector.

## SATA CD-ROM

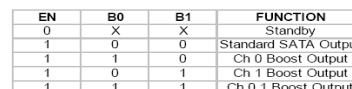


Place caps close to connector.

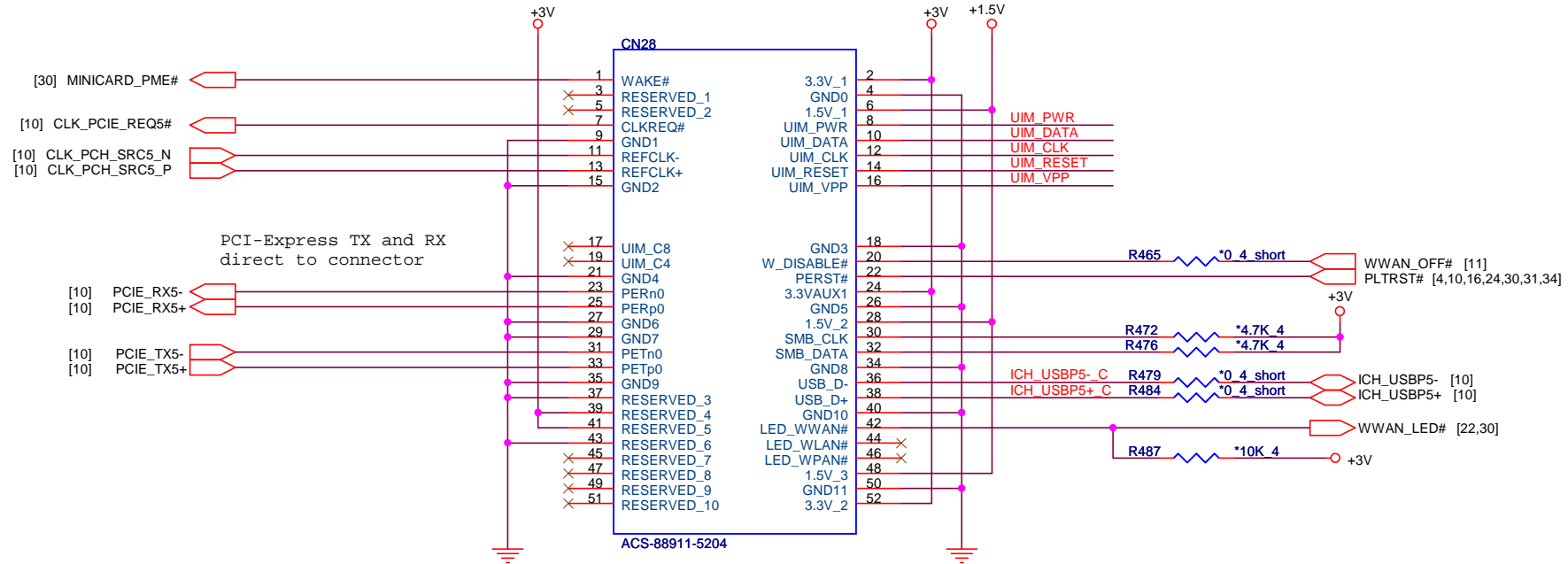


PROJECT :LL5A  
 Quanta Computer Inc.

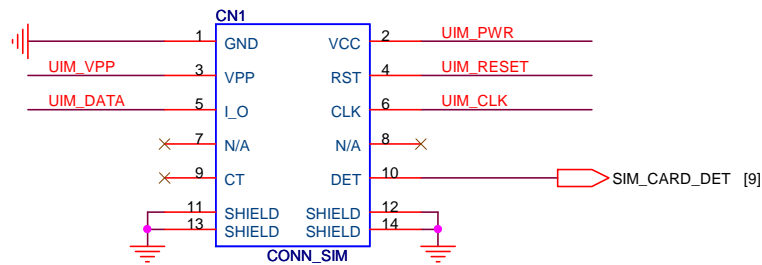
Size	Document Number	Rev
Custom	HDD/ODD	1B
Date:	Tuesday, October 20, 2009	Sheet 27 of 43



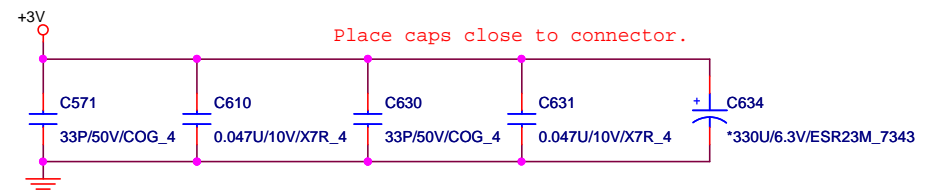
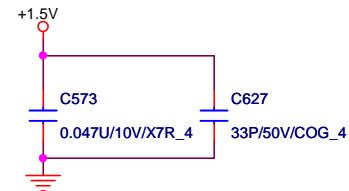
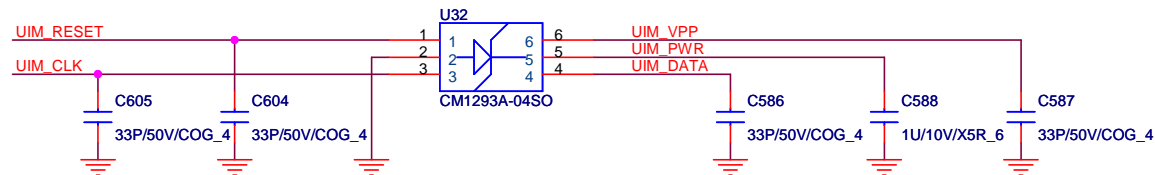
## MiniCard WWAN connector



## SIM Card CONN



**Layout Note:**  
UIM\_RESET, UIM\_CLK, UIM\_DATA routing as short as possible



**PROJECT : LL5A**  
**Quanta Computer Inc.**

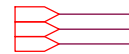
Size Custom	Document Number	Rev 1B
MINI-Card (WWAN)		
Date: Tuesday, October 20, 2009	Sheet 29 of 43	



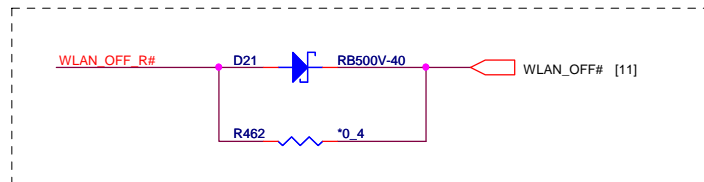
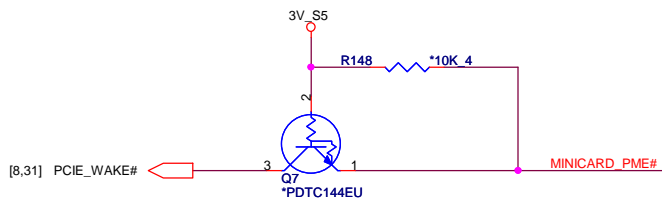
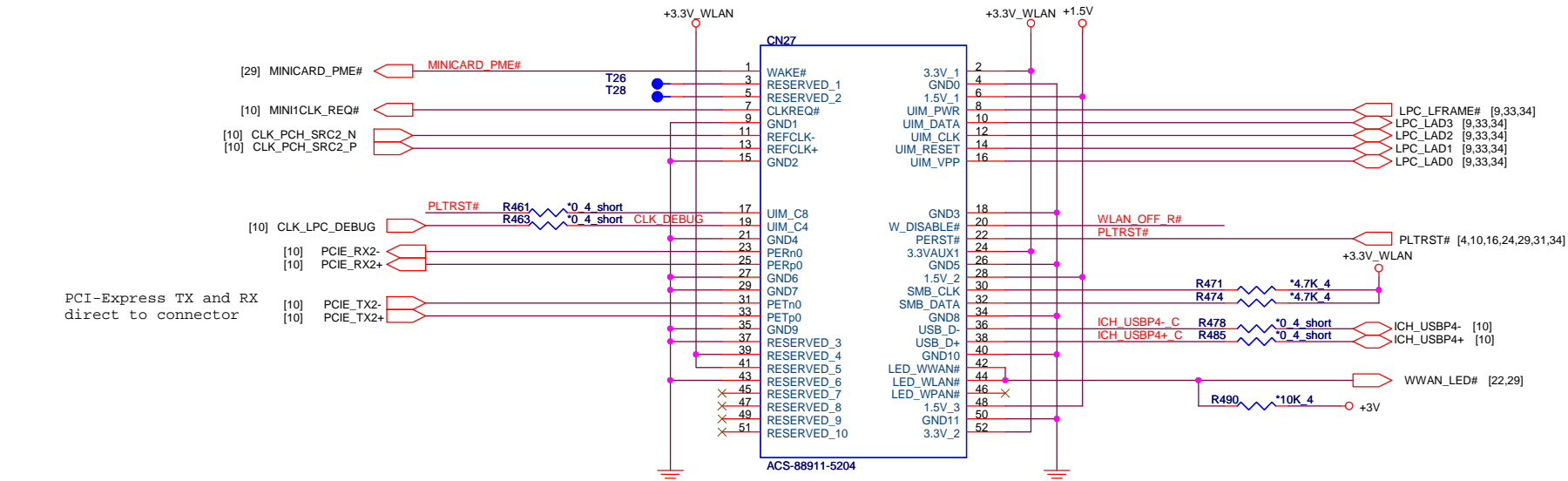
# MiniCard WLAN/WiMAX connector

[3,4,6,8,9,10,11,12,14,15,16,18,19,22,23,25,26,27,28,29,31,32,33,34,35,36,37,38,39,40,41,42]  
[3,17,21,29,31,39]  
[4,8,9,10,11,12,24,37]

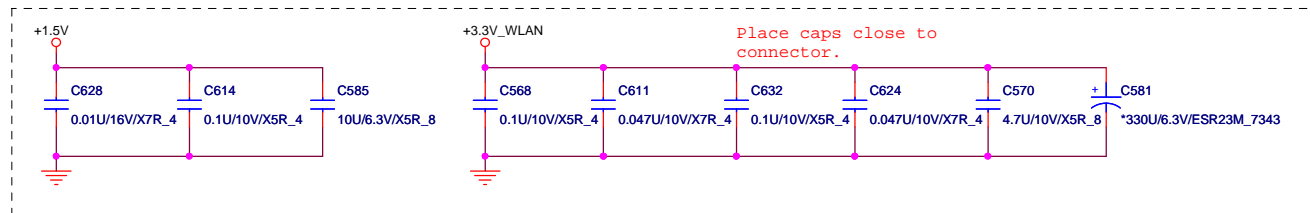
+3V  
+1.5V  
3V\_S5



30



## RF ON/OFF SWITCH



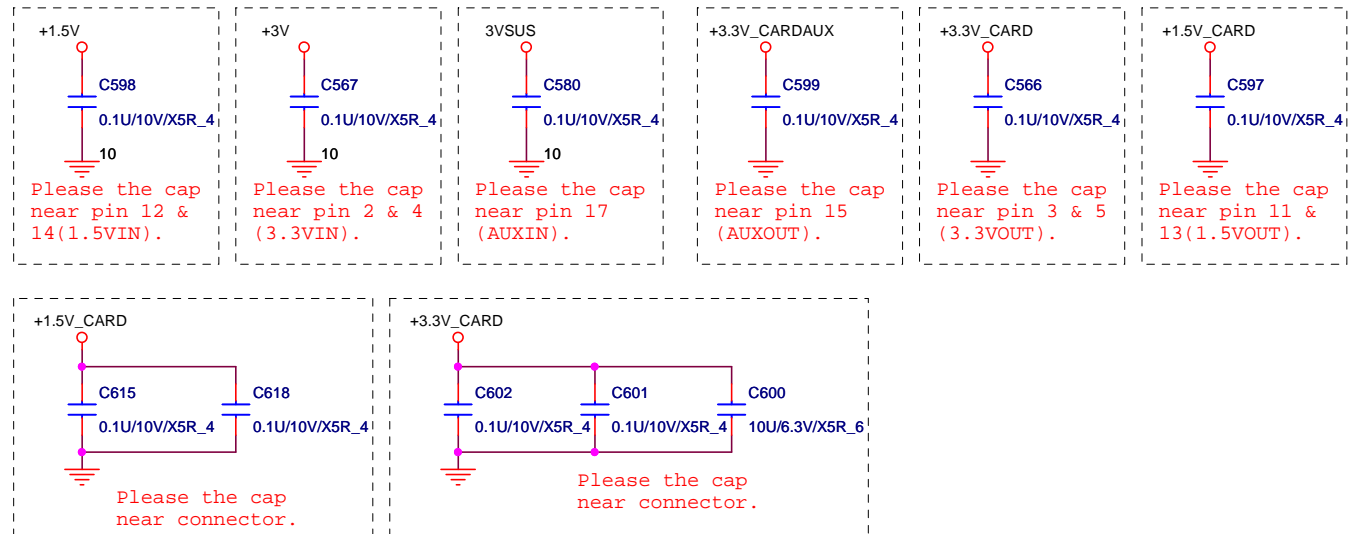
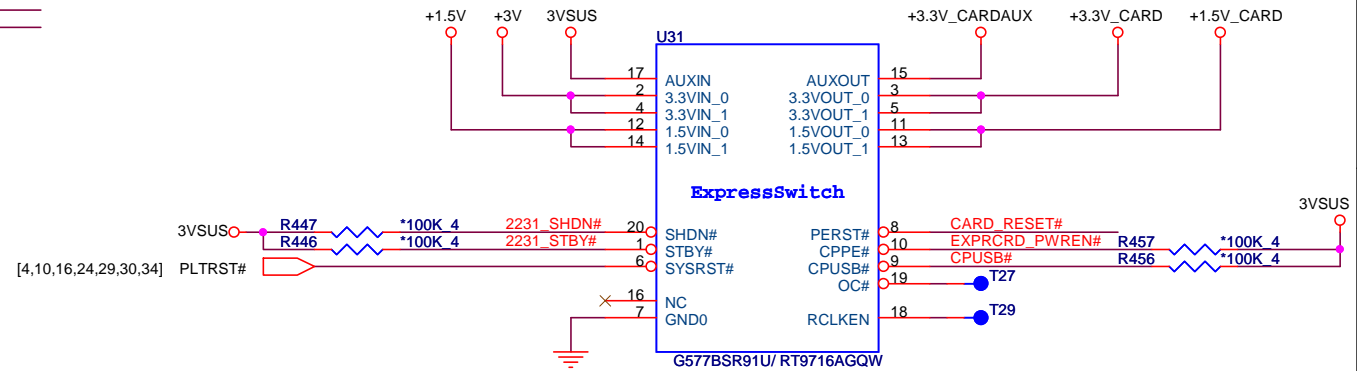
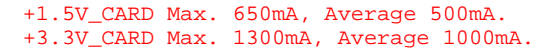
PROJECT :LL5A  
Quanta Computer Inc.

Size Custom Document Number MINI-Card (WLAN) Rev 1B

Date: Tuesday, October 20, 2009 Sheet 30 of 43

[3,4,6,8,9,10,11,12,14,15,16,18,19,22,23,25,26,27,28,29,30,32,33,34,35,36,37,38,39,40,41,42]	+3V
[3,17,21,29,30,39]	+1.5V
[33,37,43]	3VSUS

31

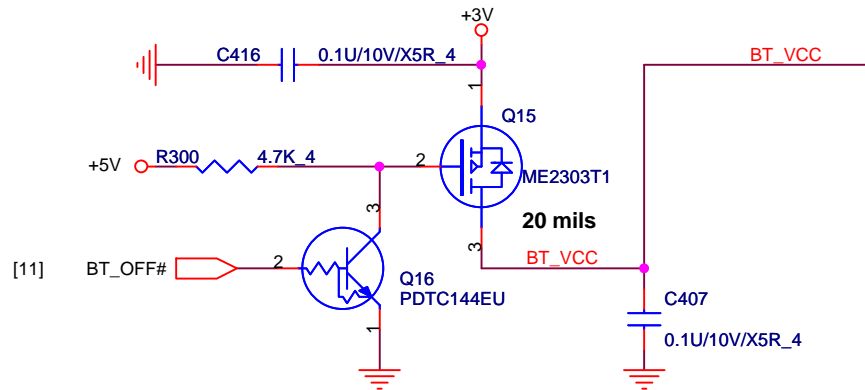
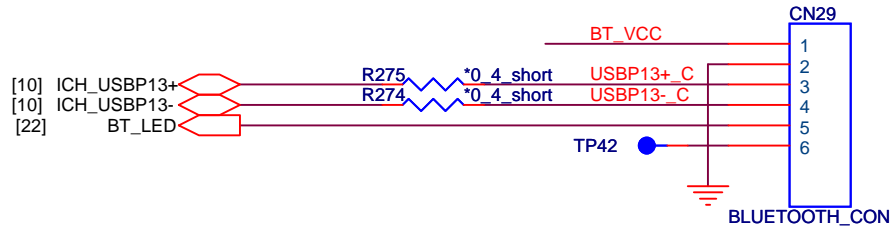


**PROJECT :LL5A**  
**Quanta Computer Inc.**

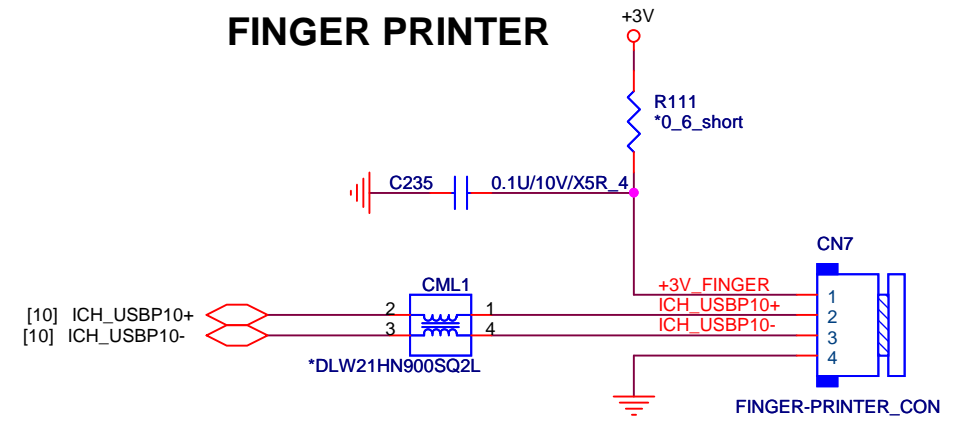
Size Custom	Document Number	Rev 1B
<b>Express Card</b>		
Date:	Tuesday, October 20, 2009	Sheet 31 of 43



## BLUETOOTH



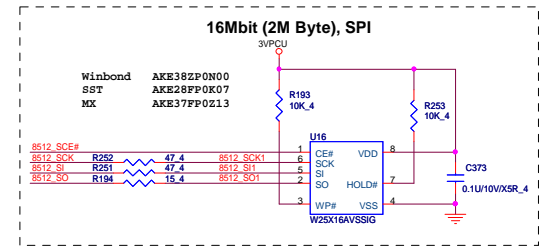
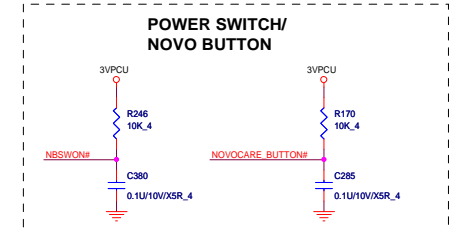
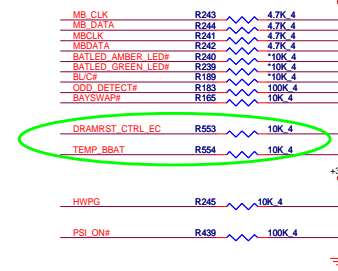
## FINGER PRINTER



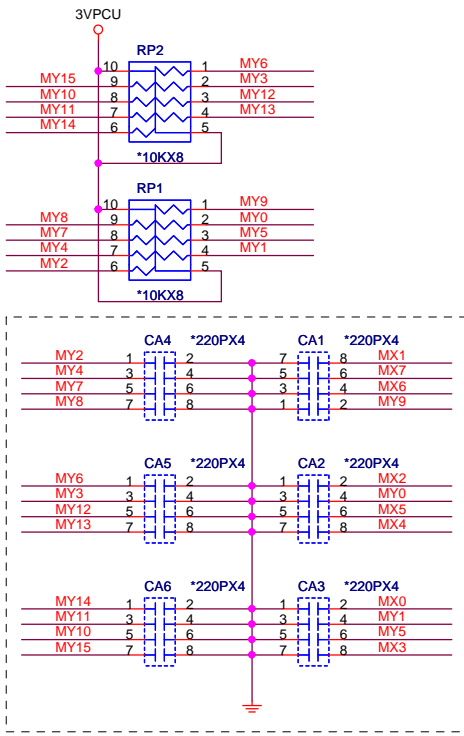
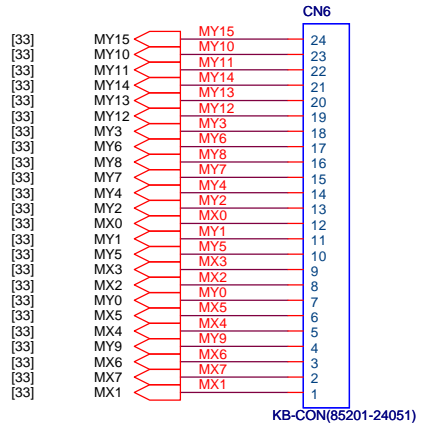
PROJECT :LL5A  
 Quanta Computer Inc.

Size Custom	Document Number	Rev 1B
Date:	Tuesday, October 20, 2009	Sheet 32 of 43

BT/FP



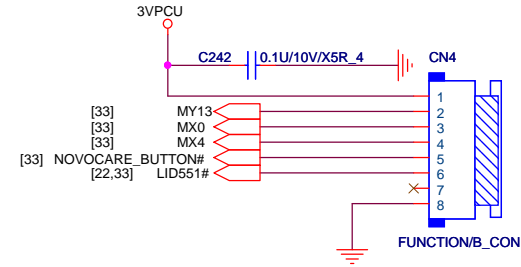
## KEYBOARD



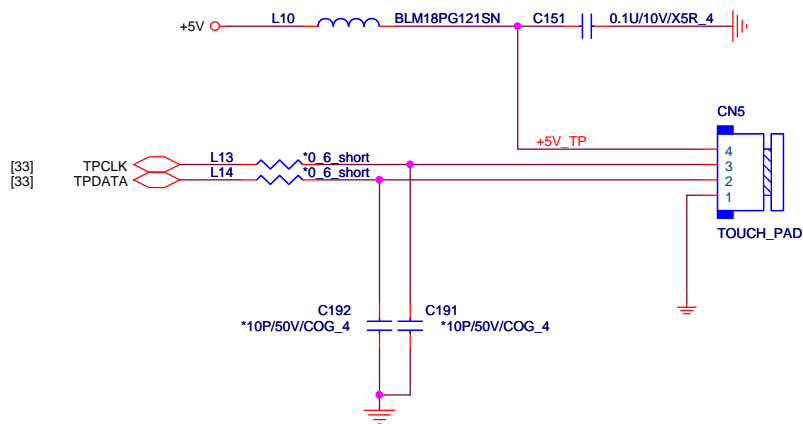
[9,22,24,27,33,35,37,38,40,41,43] 3VPCU  
[12,22,23,25,27,32,33,35,37,38] +5V  
[3,4,6,8,9,10,11,12,14,15,16,18,19,22,23,25,26,27,28,29,30,31,32,33,35,36,37,38,39,40,41,42] +3V

34

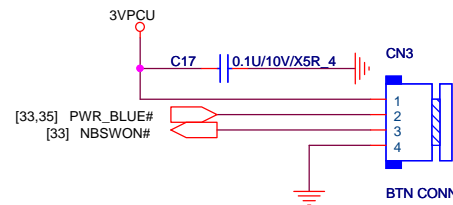
## FUNCTION BUTTON BOARD



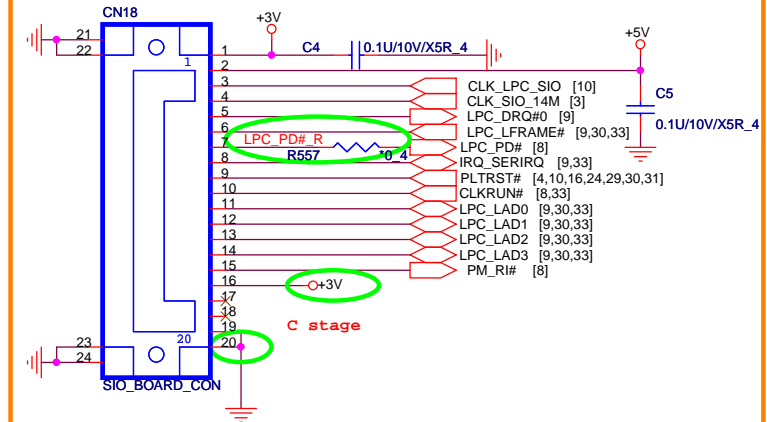
## TOUCH PAD



## POWER BUTTON BOARD



## SIO BOARD



PROJECT :LL5A  
Quanta Computer Inc.

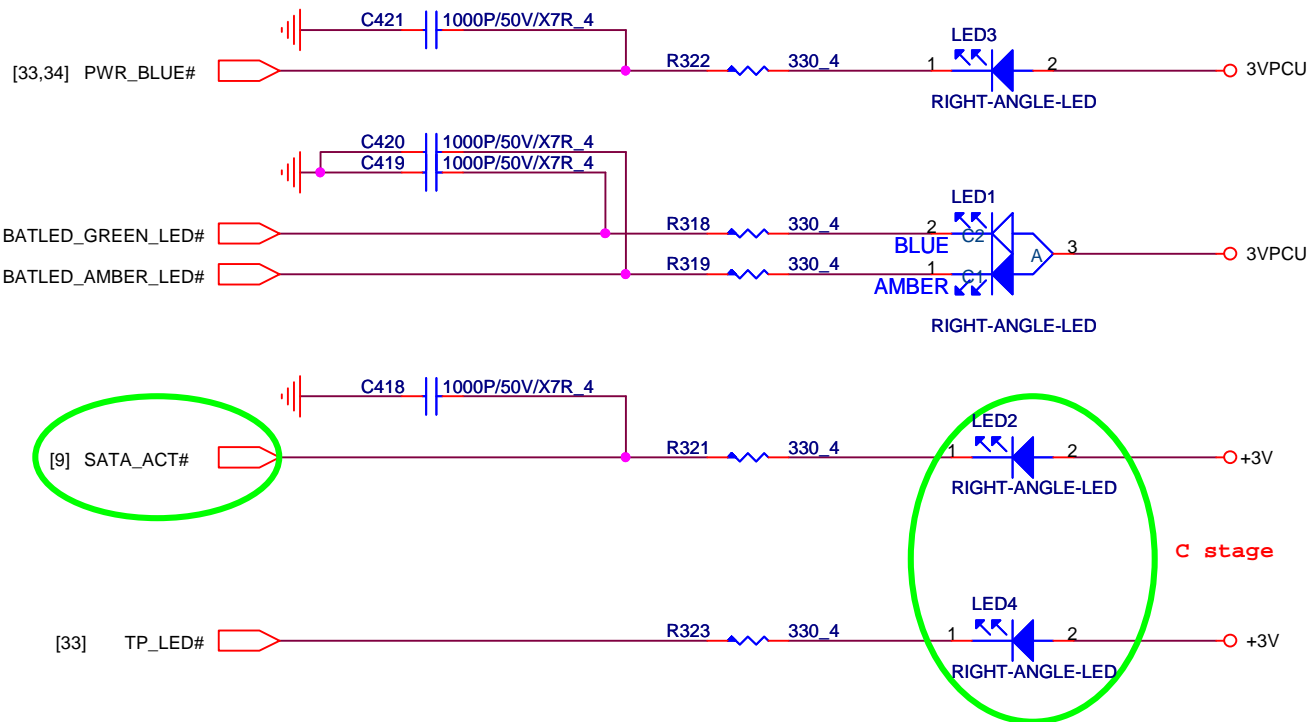
Size Custom	Document Number KB/TP/PW-B/FN-B	Rev 1B
Date: Tuesday, October 20, 2009	Sheet 34 of 43	

# LED

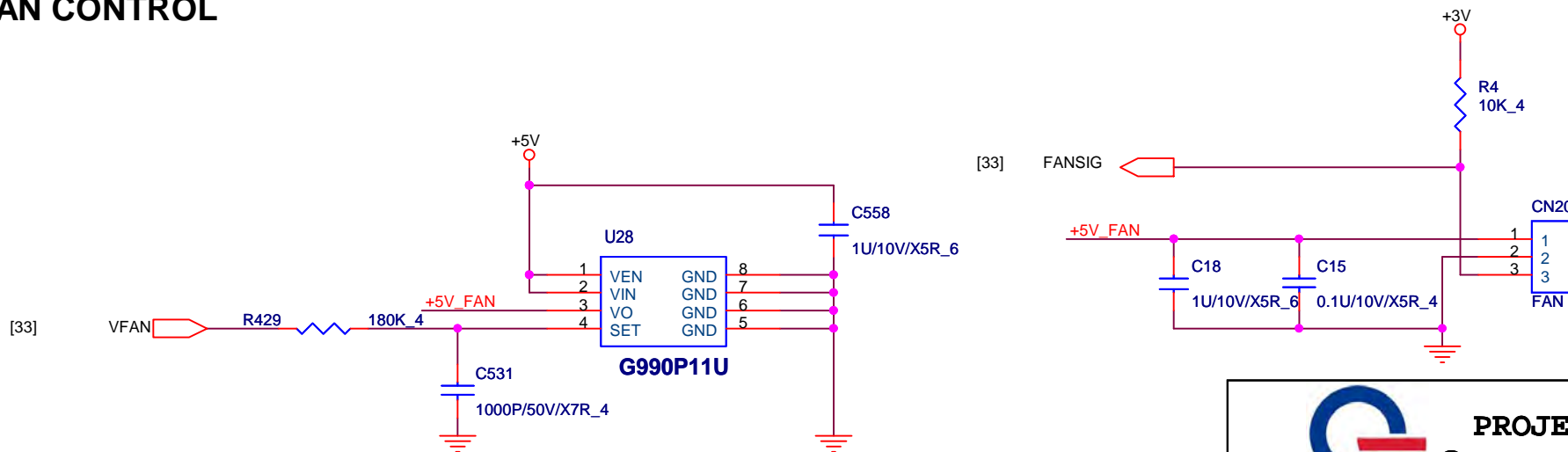
[3,4,6,8,9,10,11,12,14,15,16,18,19,22,23,25,26,27,28,29,30,31,32,33,34,36,37,38,39,40,41,42] +3V  
[12,22,23,25,27,32,33,34,37,38] +5V



35



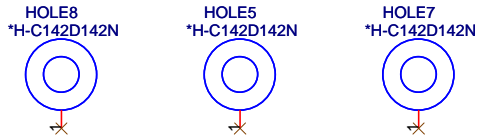
# FAN CONTROL



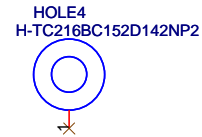
PROJECT :LL5A  
Quanta Computer Inc.

Size Custom	Document Number <b>LED/FAN</b>	Rev 1B
Date: Tuesday, October 20, 2009	Sheet 35	of 43

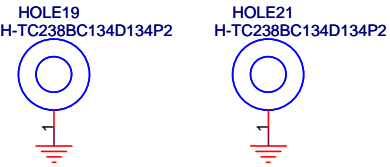
## Hole for CPU support



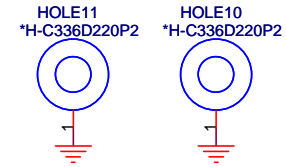
## Hole for CPU Nut



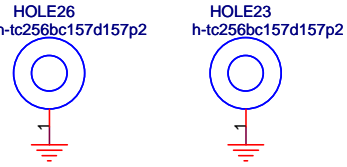
## VGA nut



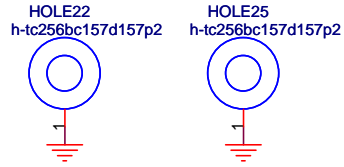
## Drink Hole



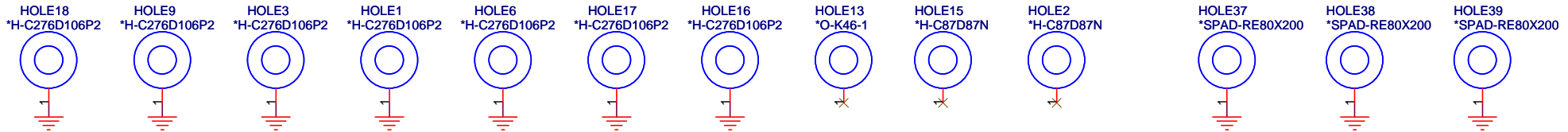
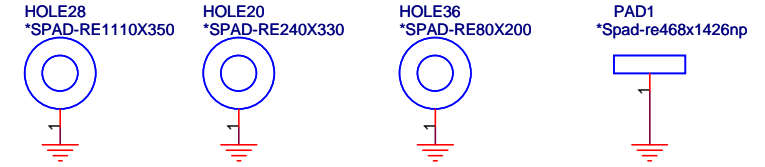
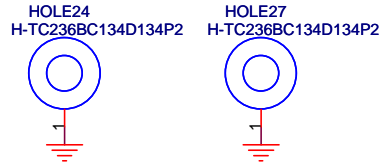
## MINI CARD nut (WLAN)



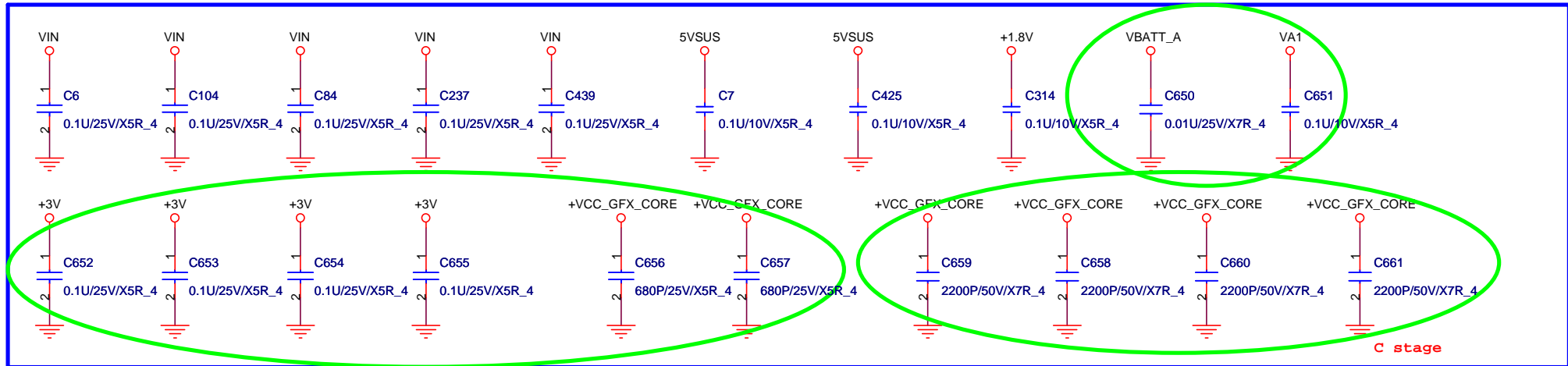
## MINI CARD nut (WWAN)



## Hole for PCH Thermal



## EMI Reserved

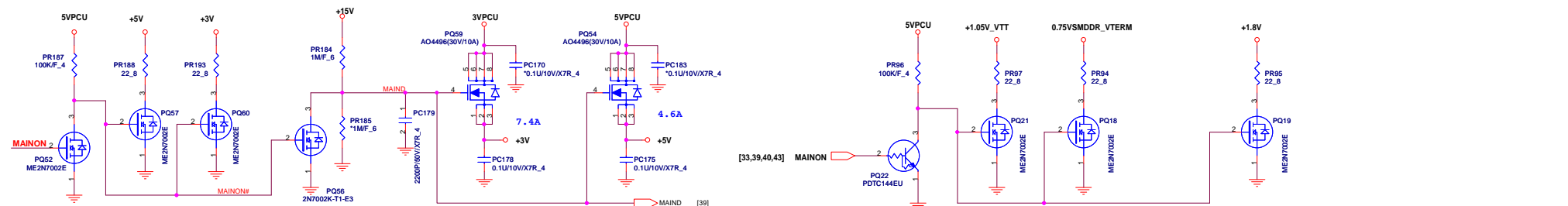


**PROJECT : LL5A**  
**Quanta Computer Inc.**

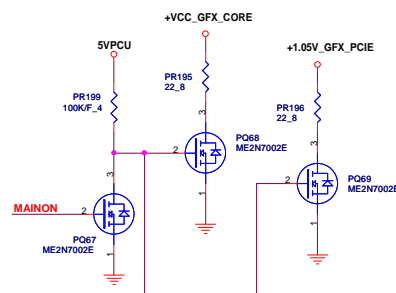
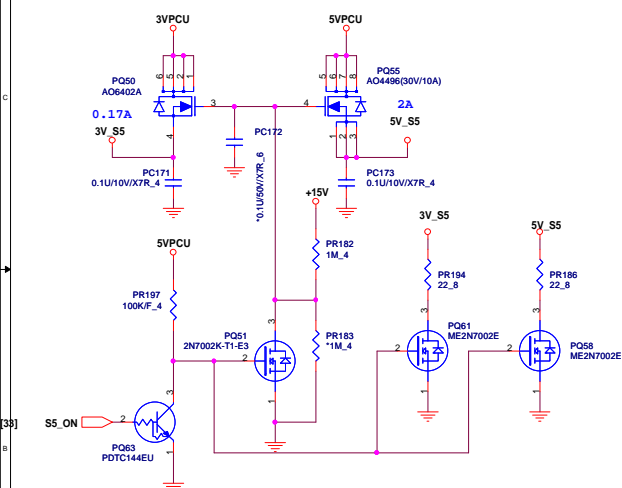
Size Custom	Document Number <b>HOLD &amp; SKEW</b>	Rev 1B
Date:	Wednesday, October 21, 2009	Sheet 36 of 43



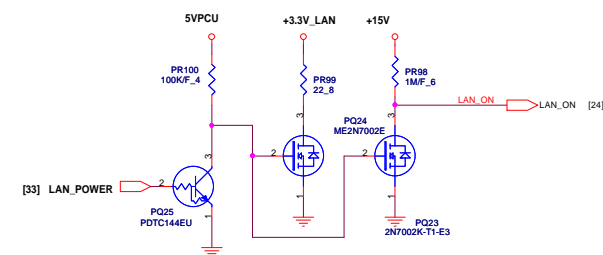
+3V, +5V



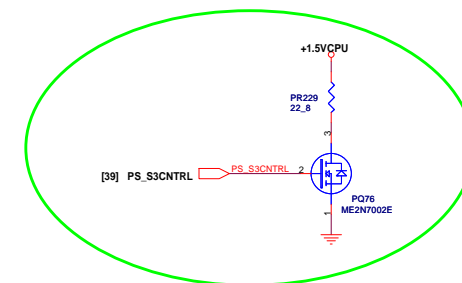
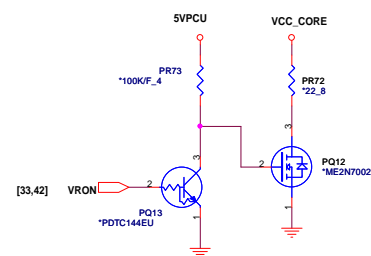
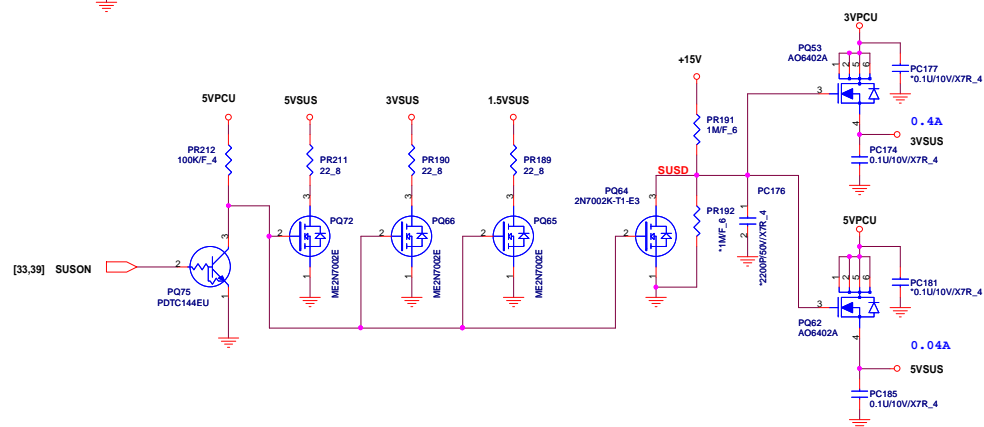
3V\_S5, 5V\_S5

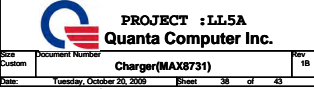


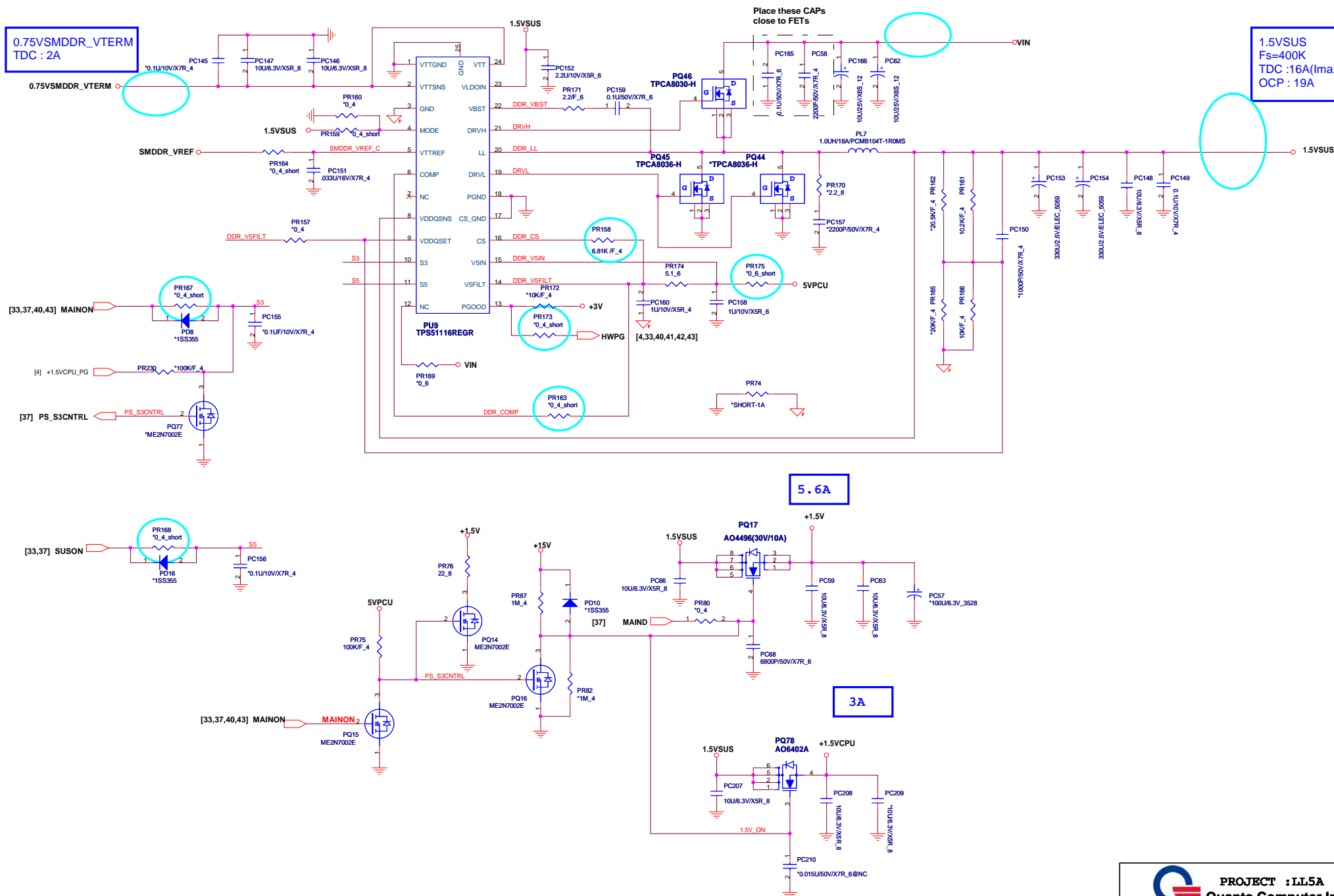
LANVCC

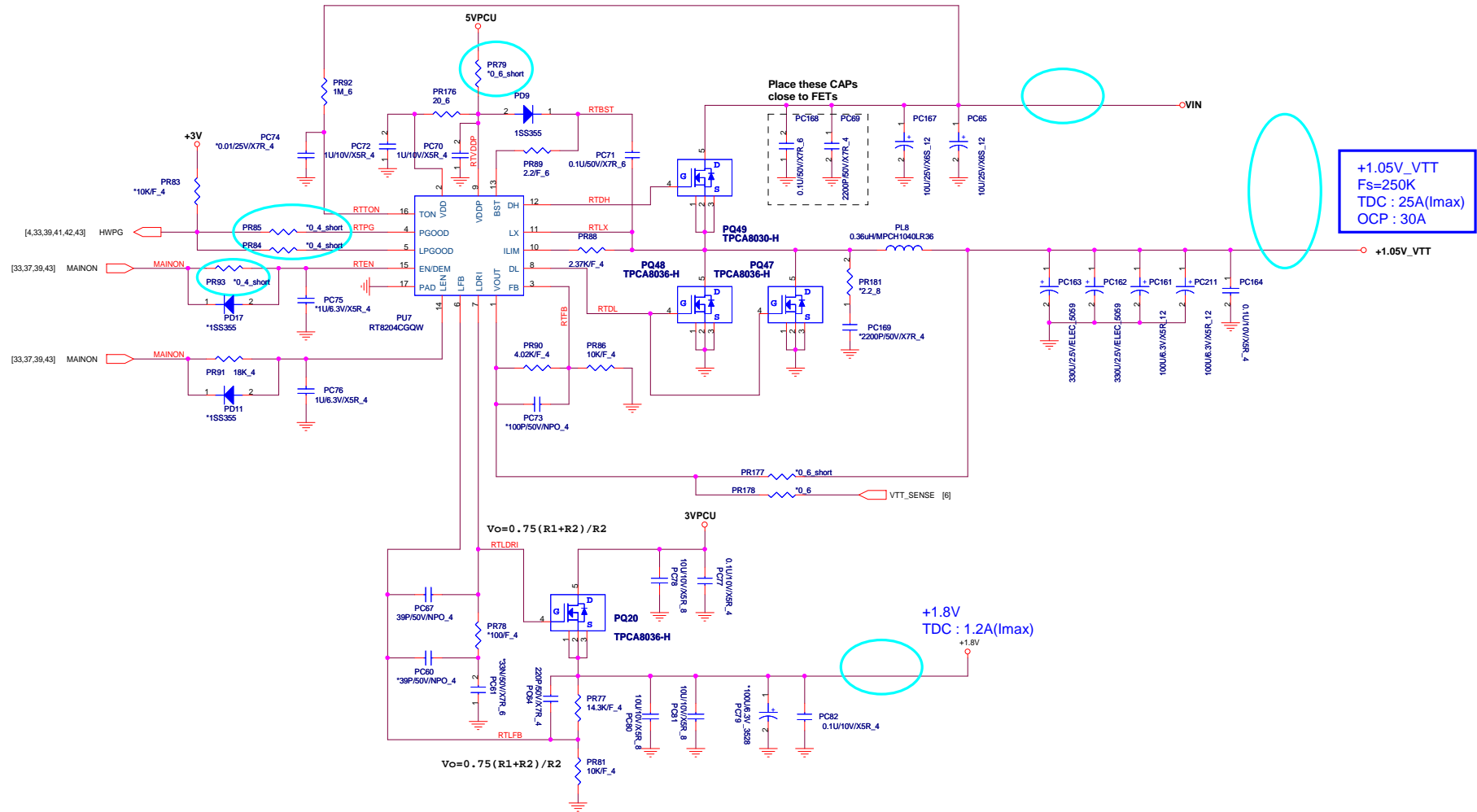


3VSUS, 5VSUS

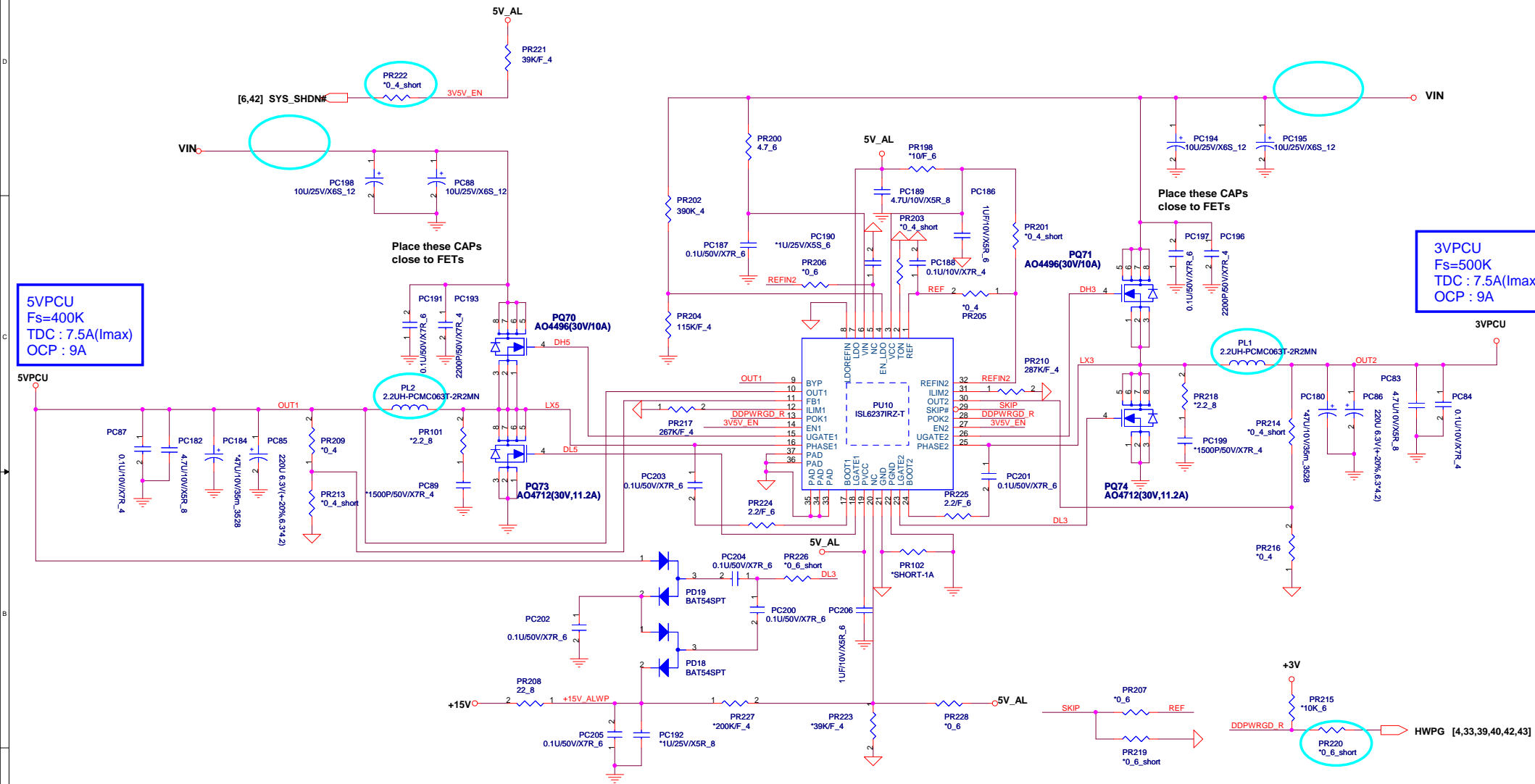
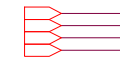


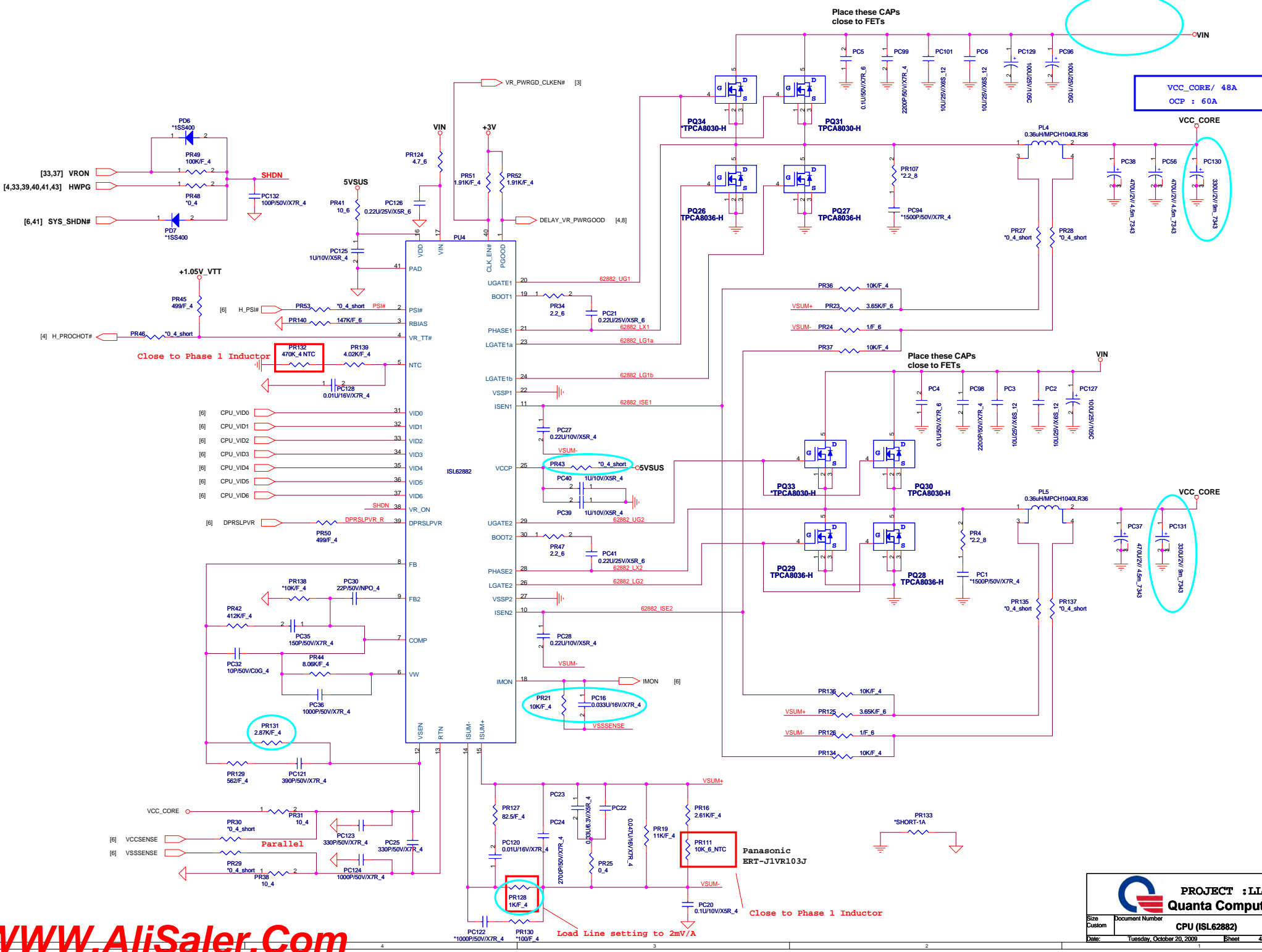






[9,22,24,27,33,34,35,37,38,40,43] 3VPCU  
 [9,27,37,38,39,40,43] 5VPCU  
 [22,27,37,39] +15V  
 [22,36,38,39,40,42,43] VIN





# For Descrete N10M VGA Only

